

DTAC UNITS

Pressurizer

602 & 603 Series

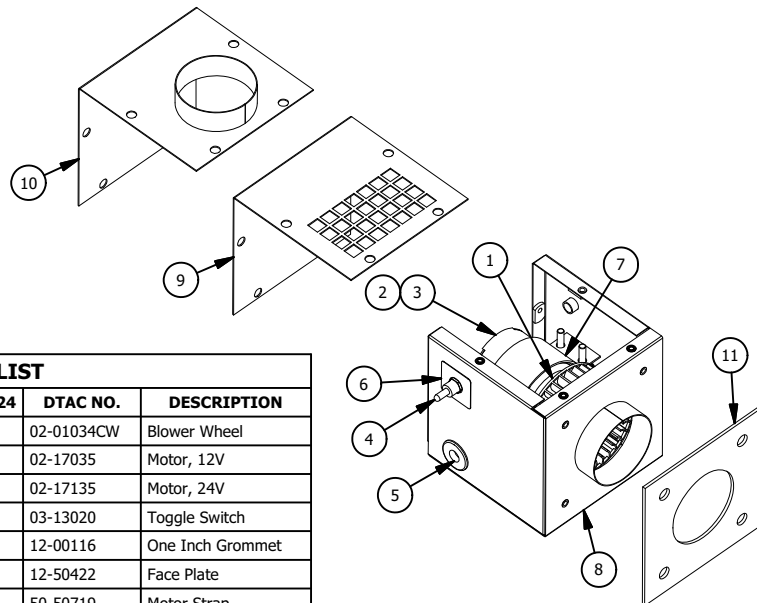


FEATURES

- Available 12 or 24 Volt
- Powder Coat Finish
- Black in Color



| SPECIFICATIONS | | | | | | | |
|----------------|----------|--------|-------|-------|--------|-------|---------------------|
| UNIT NO. | AIR FLOW | HEIGHT | WIDTH | DEPTH | WEIGHT | MOTOR | CURRENT DRAW |
| 602-12 | 190 CFM | 6" | 6" | 6" | 5 LBS | 1-12V | 6.6 AMPS @ 13.5 VDC |
| 602-24 | 190 CFM | 6" | 6" | 6" | 5 LBS | 1-24V | 3.3 AMPS @ 26.8 VDC |
| 603-12 | 190 CFM | 6" | 6" | 6" | 5 LBS | 1-12V | 6.6 AMPS @ 13.5 VDC |
| 603-24 | 190 CFM | 6" | 6" | 6" | 5 LBS | 1-24V | 3.3 AMPS @ 26.8 VDC |



| 602 & 603 PARTS LIST | | | | | | |
|----------------------|------------|------------|------------|------------|------------|--------------------|
| ITEM | QTY 602-12 | QTY 602-24 | QTY 603-12 | QTY 603-24 | DTAC NO. | DESCRIPTION |
| 1 | 1 | 1 | 1 | 1 | 02-01034CW | Blower Wheel |
| 2 | 1 | 0 | 1 | 0 | 02-17035 | Motor, 12V |
| 3 | 0 | 1 | 0 | 1 | 02-17135 | Motor, 24V |
| 4 | 1 | 1 | 1 | 1 | 03-13020 | Toggle Switch |
| 5 | 1 | 1 | 1 | 1 | 12-00116 | One Inch Grommet |
| 6 | 1 | 1 | 1 | 1 | 12-50422 | Face Plate |
| 7 | 1 | 1 | 1 | 1 | 50-50719 | Motor Strap |
| 8 | 1 | 1 | 1 | 1 | 60-30000 | 603 Housing |
| 9 | 0 | 0 | 1 | 1 | 60-30001 | 603 Lid |
| 10 | 1 | 1 | 0 | 0 | 60-30002 | 602 Lid |
| 11 | 1 | 1 | 1 | 1 | 60-30003 | Insulation 602,603 |



PREVENTATIVE MAINTENANCE

DTAC strives to manufacture A/C systems of superior quality. However, as with all mechanical equipment, normal maintenance must be performed for your A/C to function at peak capacity. A well-maintained A/C system will save on down time and premature component failures.

Weekly inspections or every 2 days in severe environments should include:

1. Inspect compressor clutch drive belts (tightness, wear).
2. Inspect compressor mounting brackets (bolts, alignment).
3. Inspect mounting hardware on evaporator unit and condensers.
4. Inspect air intake filter. (Clean or replace filter).
5. Inspect evaporator and condenser coils. (Clean using air pressure. **DO NOT USE WATER OR PRESSURE WASHERS**).
6. Inspect hose and wire harness for proper routing, leaks and wear.

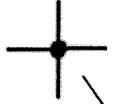
Helpful Hints

Make sure the evaporator air intake area is not obstructed (i.e. toolboxes, clothing, lunch box, etc.).

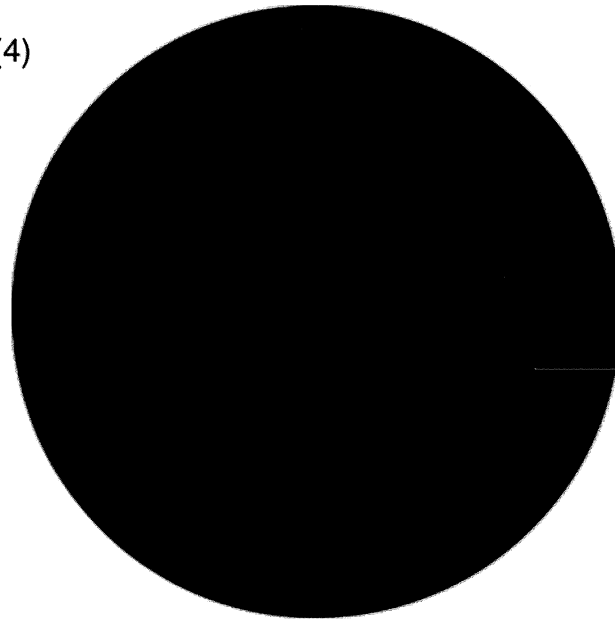
Manual thermostats on our systems, when rotated clockwise to the stop position will not allow the A/C compressor clutch to cycle. The compressor will run continuously and the evaporator coil will not defrost. **REMEDY:** Turn the manual thermostat knob clockwise to the stop position, then turn the thermostat knob back counter clockwise $\frac{1}{4}$ turn.

DTAC thanks you for purchasing our units. It is our endeavor to provide you with a quality A/C unit with trouble free service.

Mounting Template



Drill 3/8" hole (4)



Cut Outside Line



15-60300