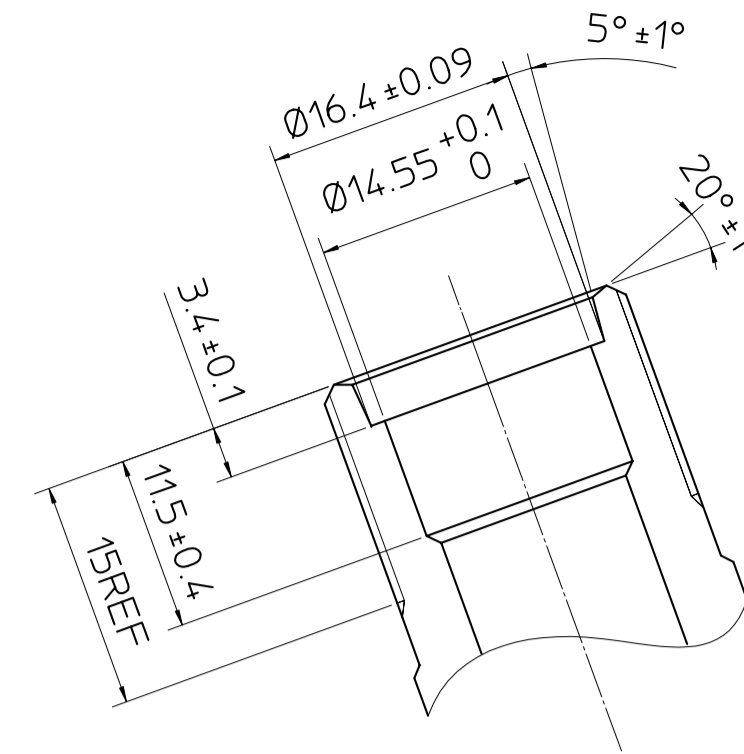
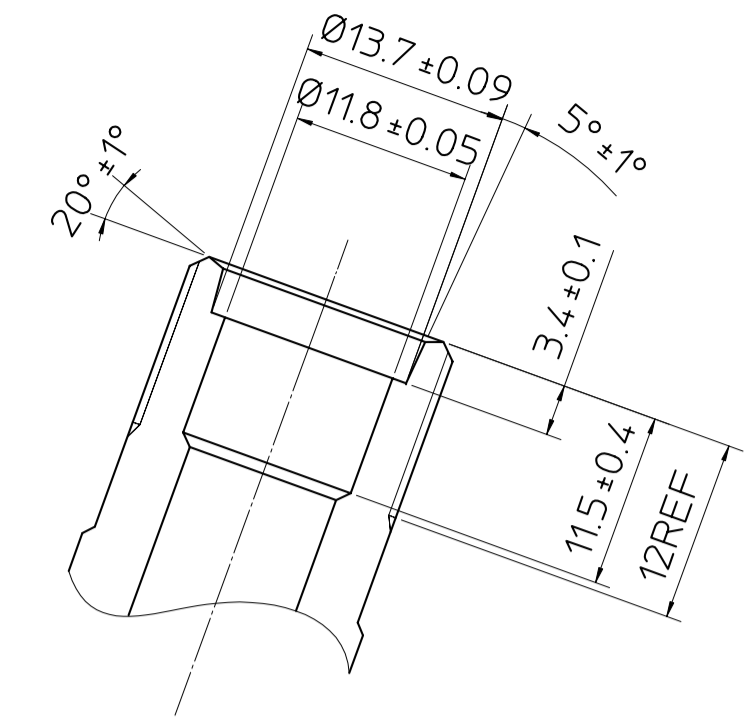


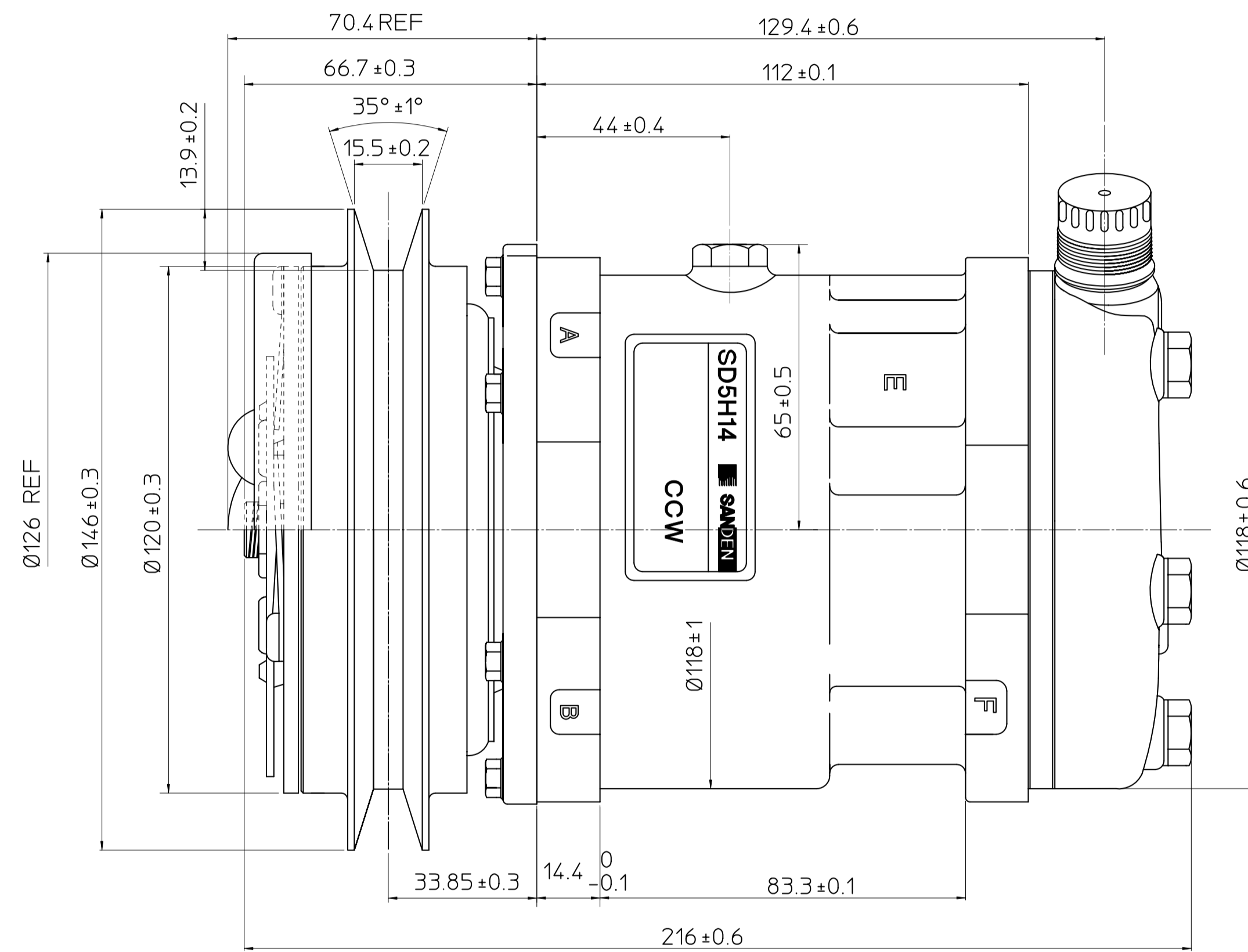
PARTIAL SECT A-A



PARTIAL SECT B-B (2:1)

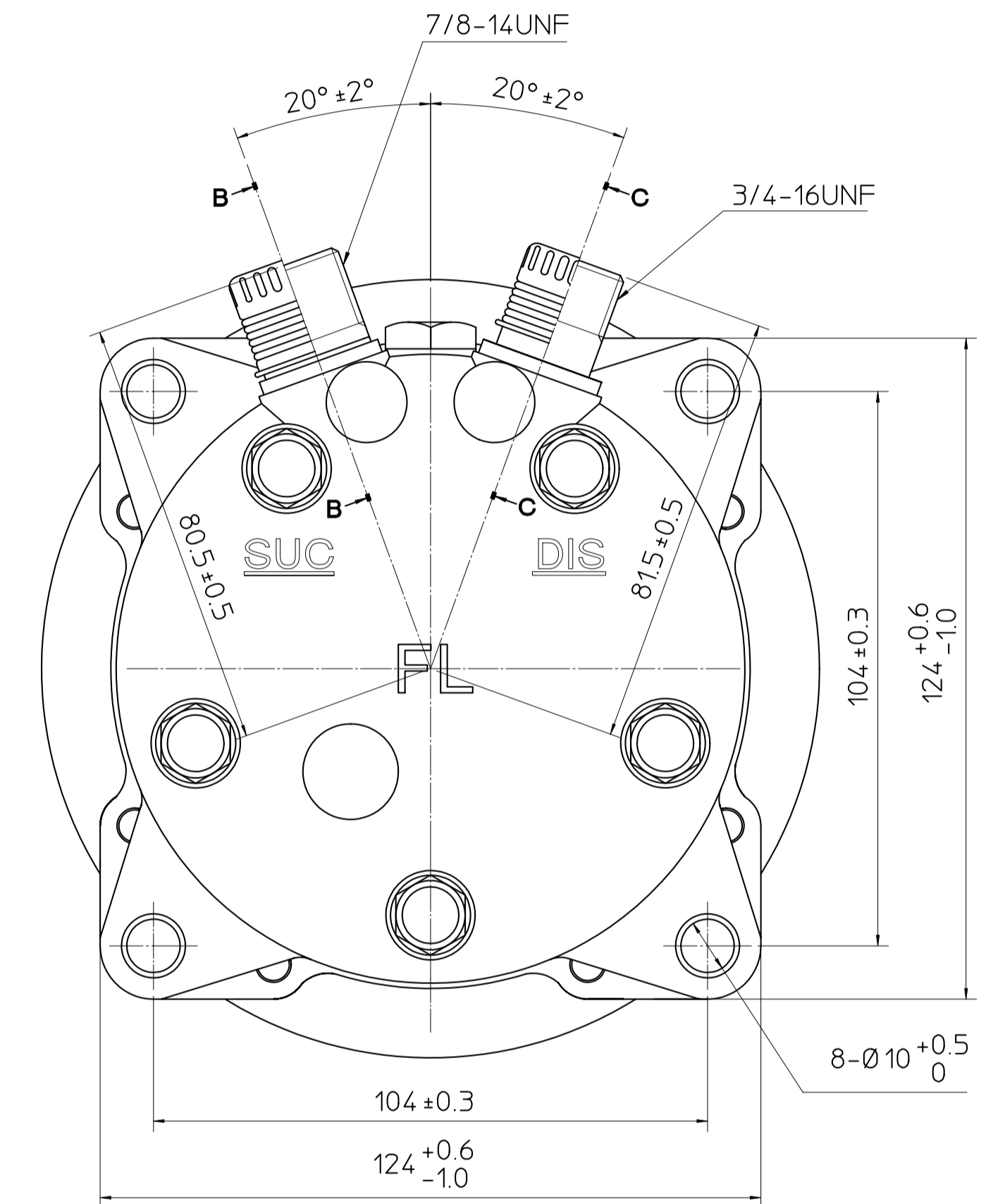


PARTIAL SECT C-C (2:1)



COMPRESSOR SPECIFICATIONS

BORE	Ø35 mm
STROKE	28.6 mm
DISPLACEMENT PER REVOLUTION	138 cc/rev
NUMBER OF CYLINDERS	5
MAXIMUM ALLOWABLE r.p.m.	4000 r.p.m.
MAXIMUM ALLOWABLE CONTINUOUS r.p.m.	4000 r.p.m.
REFRIGERANT	HFC134a
OIL (SP-20 OR EQUIV.)	175 cc
ROTATION (CLUTCH SIDE VIEW)	COUNTER-CLOCKWISE
WEIGHT	4.7 kg



CLUTCH SPECIFICATIONS

RATED VOLTAGE	DC 24 V
BREAKAWAY TORQUE	3.5 kg-m
MINIMUM ENGAGEMENT VOLTAGE	16 V max
POWER CONSUMPTION	42 W (Cu)
MAXIMUM ALLOWABLE r.p.m.	4000 r.p.m.
MAXIMUM ALLOWABLE CONTINUOUS r.p.m.	4000 r.p.m.
BELT TYPE	B1
PULLEY DIAMETER	Ø146 mm
WEIGHT	2.9 kg

△				MATERIAL	PART NO.	NAME
△					5311	COMPRESSOR
△				THIRD ANGLE PROJECTION	SCALE	1:1
△				DESIGN BY	CHECKED BY	APPROVED BY
△				邹顺发	邹顺发	邹顺发
△				04.03.2008	04.03.2008	04.03.2008
				Raymond	Raymond	Raymond
No.	REVISION RECORD	BY	DATE	MODEL SD5H14FL5311		
				DRAWING NO. 5311-6000S		