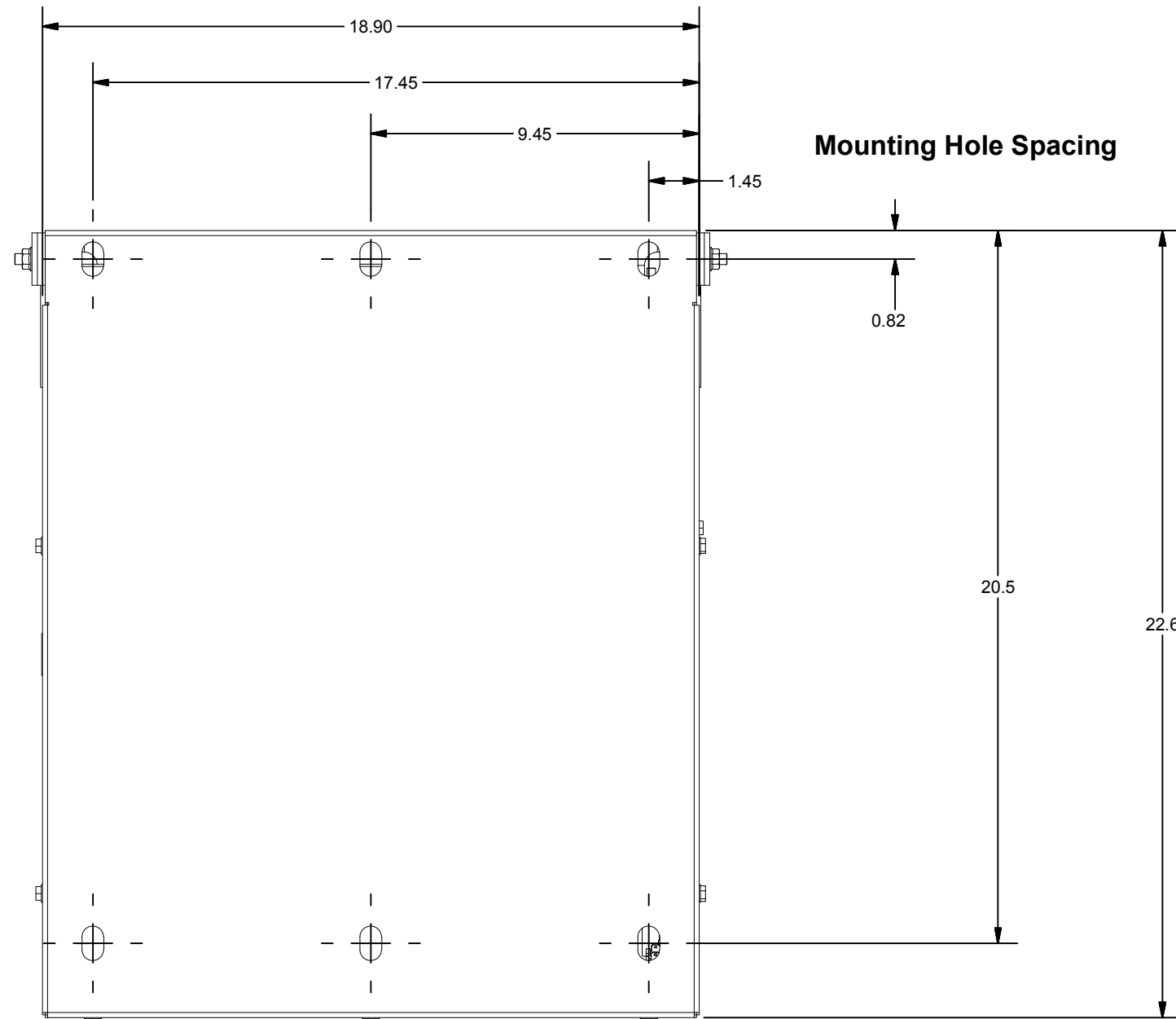
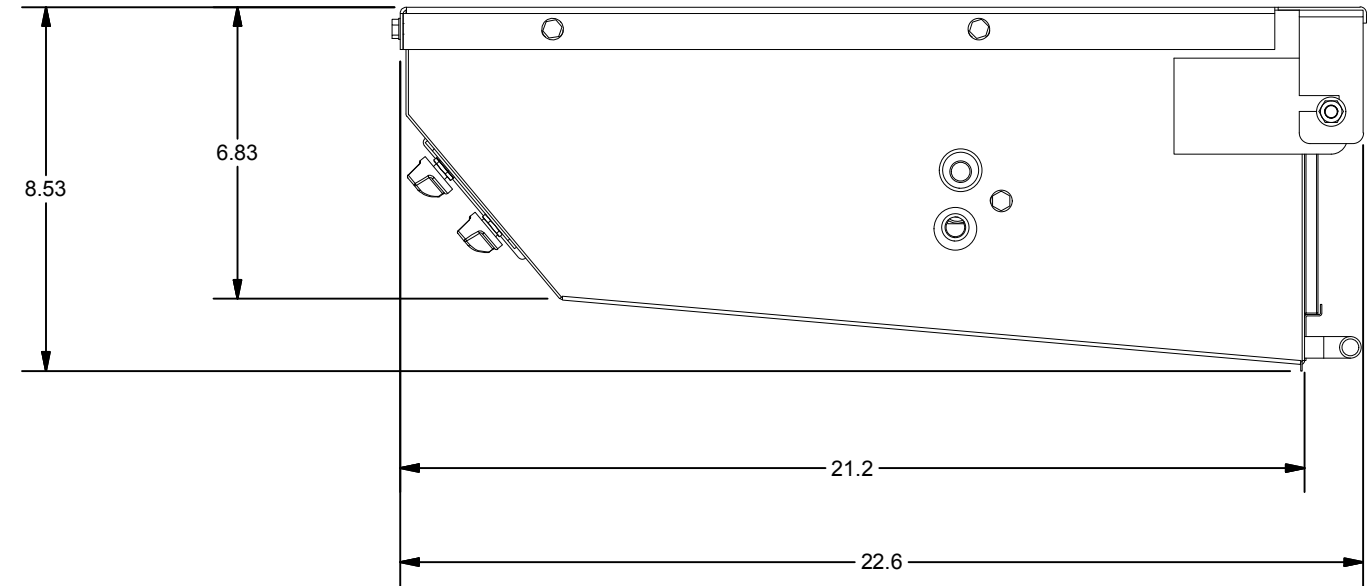
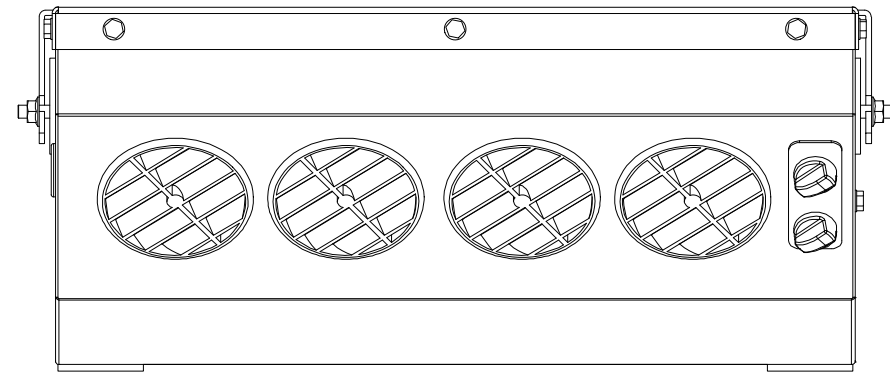



310, 311 FOOTPRINT AND MOUNTING INFORMATION



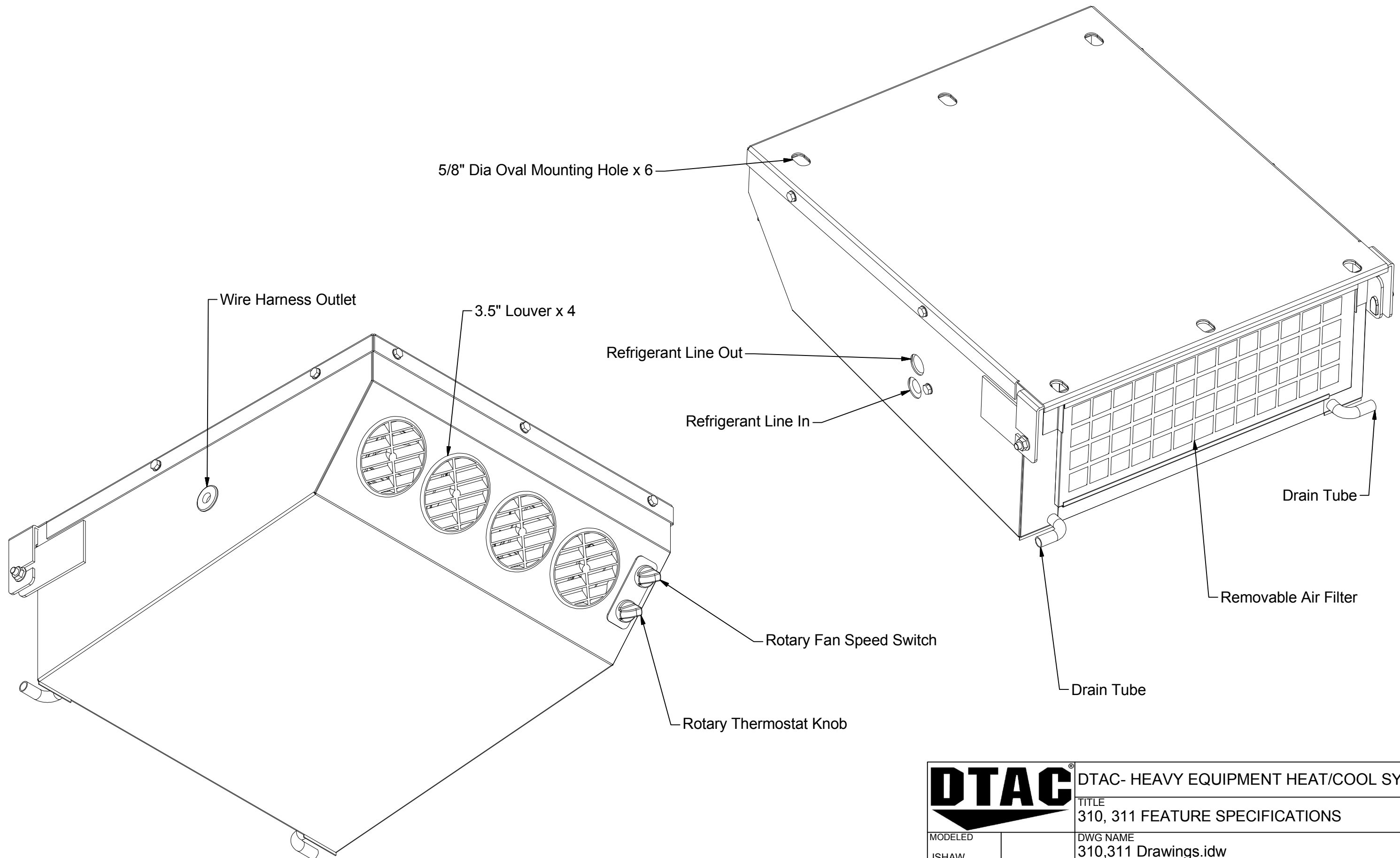
Mounting Hole Spacing


Mounting Specifications	
Quantity	Description
6	5/8" DIA OVAL HOLE- NO THREADS
6	5/16-18 X 1-1/2NCLC*HEX CAP TAP
6	WASHER, 1/4 FLAT
6	5/16 WHIZ NUT

NOTE: 311 does not come with mounting hardware or drain hose

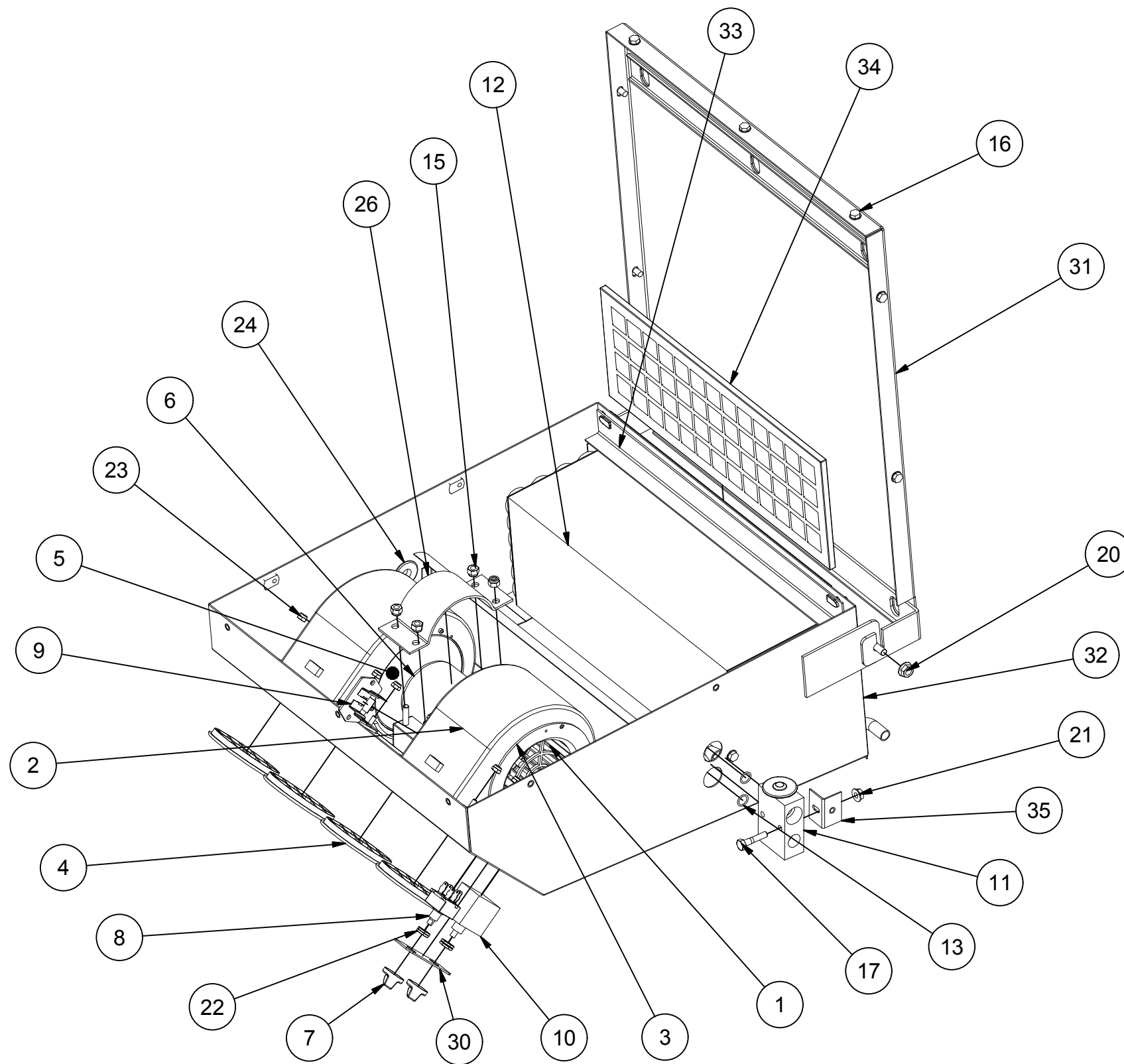
		DTAC- HEAVY EQUIPMENT HEAT/COOL SYSTEMS	
		TITLE 310, 311 FOOTPRINT AND MOUNTING INFORMATION	
MODELED JSHAW		DWG NAME 310,311 Drawings.idw	
DRAWN jhamaker	8/10/2011	SIZE B	NOTE: ALL UNITS IN INCHES

310, 311 FEATURE SPECIFICATIONS



		DTAC- HEAVY EQUIPMENT HEAT/COOL SYSTEMS	
		TITLE 310, 311 FEATURE SPECIFICATIONS	
MODELED JSHAW		DWG NAME 310,311 Drawings.idw	
DRAWN jhamaker	8/10/2011	SIZE B	NOTE: ALL UNITS IN INCHES

310, 311 PARTS BREAKDOWN AND UNIT SPECIFICATIONS

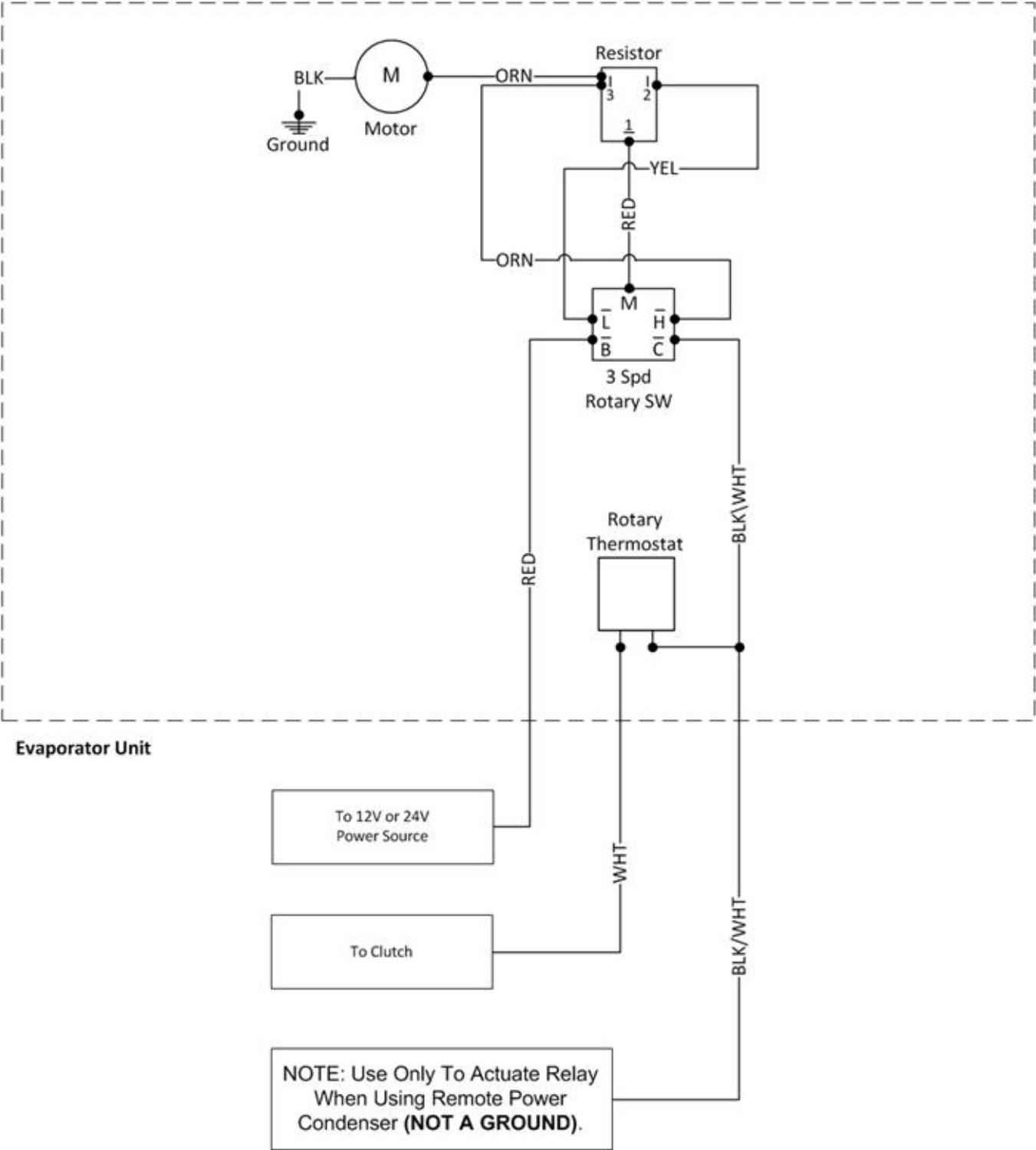


Parts Breakdown				
ITEM	QTY	DTAC NO.	DESCRIPTION	NOTE
1	1	02-16039	Blower Wheel CCW 701	
2	2	02-16058	Blower Housing	
3	2	02-16059	Venturi for 882 Blower Housing	
4	4	02-16061	3-1/2" Louver	
5	1	02-16400	Blower Wheel CW 701	
6	1	02-17018 or 02-17118	12V DS 1SP Motor or 24V DS 1SP Motor	
7	2	03-00165	Knob	
8	1	03-13006	Rotary 3-Speed Switch	
9	1	03-13043	Resistor 3 Prong	
10	1	03-14002	Rotary Thermostat	
11	1	04-15004	Block Expansion Valve	
12	1	07-00311	Evaporator Coil	
13	2	09-04012	#8 O-Ring	
14	15 ft	10-20012	Drain Hose	1,2
15	4	12-00001	1/4 - 20 Nylon Nut	
16	8	12-00003	1/4-20 X 3/8 Bolt	
17	1	12-00021	1/4-20 x 1.25 Hex Bolt	
18	6	12-00023	5/16-18 x 1.5 Hex Cap Bolt	1,2
19	6	12-00044	1/4 Flat Washer	1,2
20	8	12-00054	Whiz Nut 5/16-18	
21	1	12-00057	1/4-20 Whiz Nut	
22	4	12-00059	Standard Switch Nut	
23	9	12-00061	10-24 Nylock Nut	
24	1	12-00116	One Inch Grommet	
25	2	12-00123	Copper Kazzoo	1,2
26	1	12-00130	Top Motor Mount	
27	1	12-00801	Wire Harness	1
28	1	12-01874	1/2 Plastic Tee	1,2
29	2	12-01875	1/2 Plastic Elbow	1,2
30	1	12-50419	Faceplate	
31	1	31-10001	Lid	
32	1	31-10002	Btm Housing	
33	1	31-10003	Coil Brkt	
34	1	40-00003	Intake Filter	
35	1	50-50500	Expansion Valve Mnt Brkt	
-	-	Note 1	Part not shown	
-	-	Note 2	Part not included on 311-24	

Unit Specifications						
BTU'S COOL	BTU'S HEAT	AIR FLOW	WEIGHT	MOTOR	CURRENT DRAW	DTAC NO.
36,000	-	405 CFM	46 LBS	1-12V	22.5 AMPS @ 13.6 VDC	310-12
"	-	"	"	1-24V	15 AMPS @ 26.8 VDC	310-24
"	-	"	"	"	"	311-24

		DTAC- HEAVY EQUIPMENT HEAT/COOL SYSTEMS	
		TITLE 310, 311 PARTS BREAKDOWN AND UNIT SPECIFICATIONS	
MODELED	JSHAW	DWG NAME 310,311 Drawings.idw	
DRAWN		8/10/2011	SIZE B
jhamaker		SHEET 3 OF 4	

310 & 311 Series - Cool Only Wire Diagram



Manufacturer of Heavy Equipment Heat/Cool Systems
 5130 Edgefield Ln, TX 76065 USA
 Phone 1-800-527-9477 Fax 1-800-299-5972
 www.dtac.com

12-00801 MOD
 07.19.10

SIZE
 B