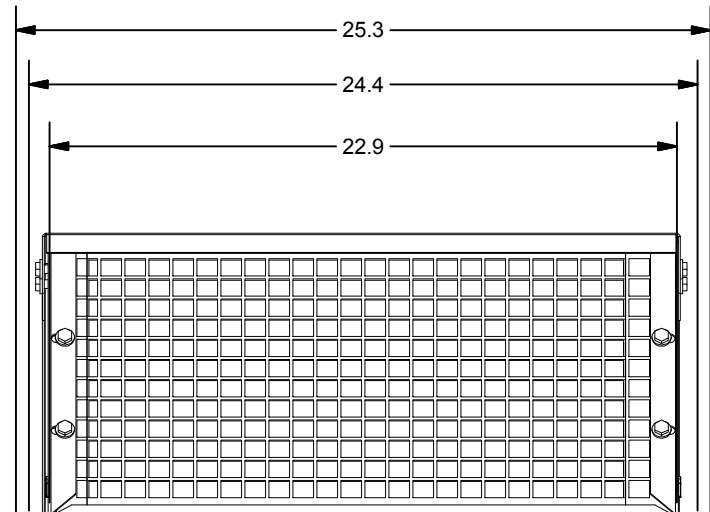
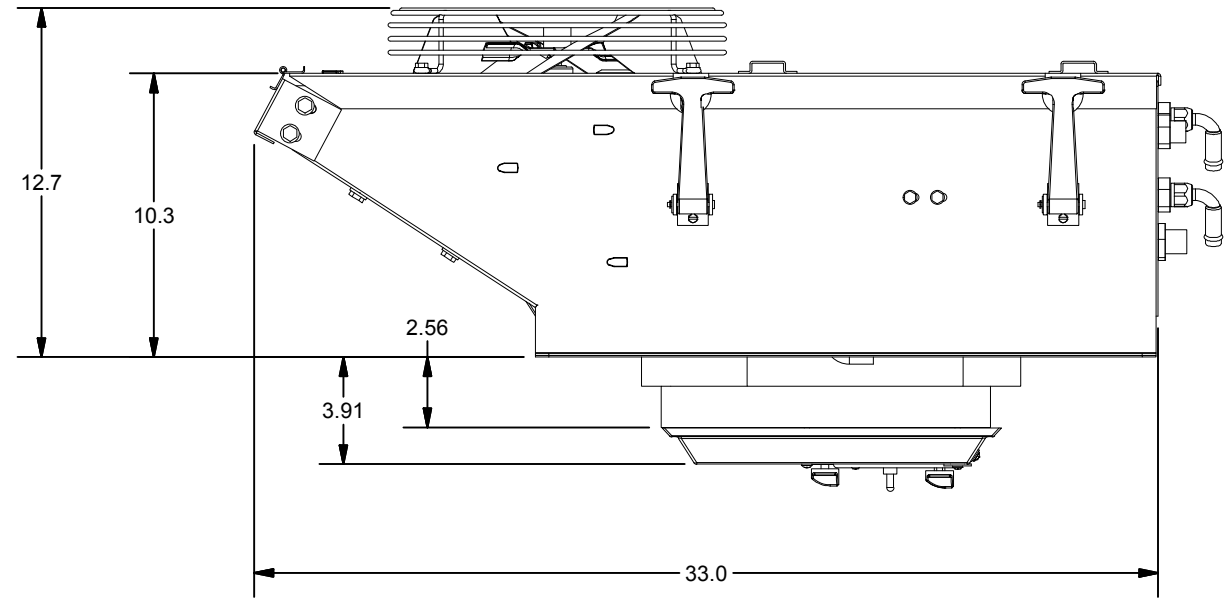
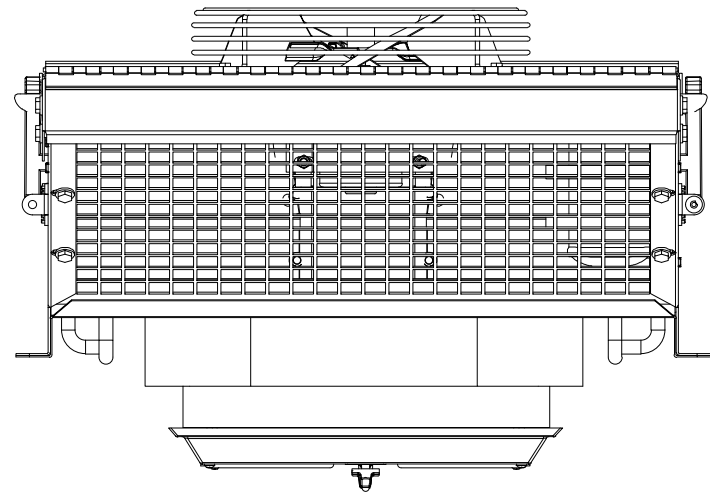
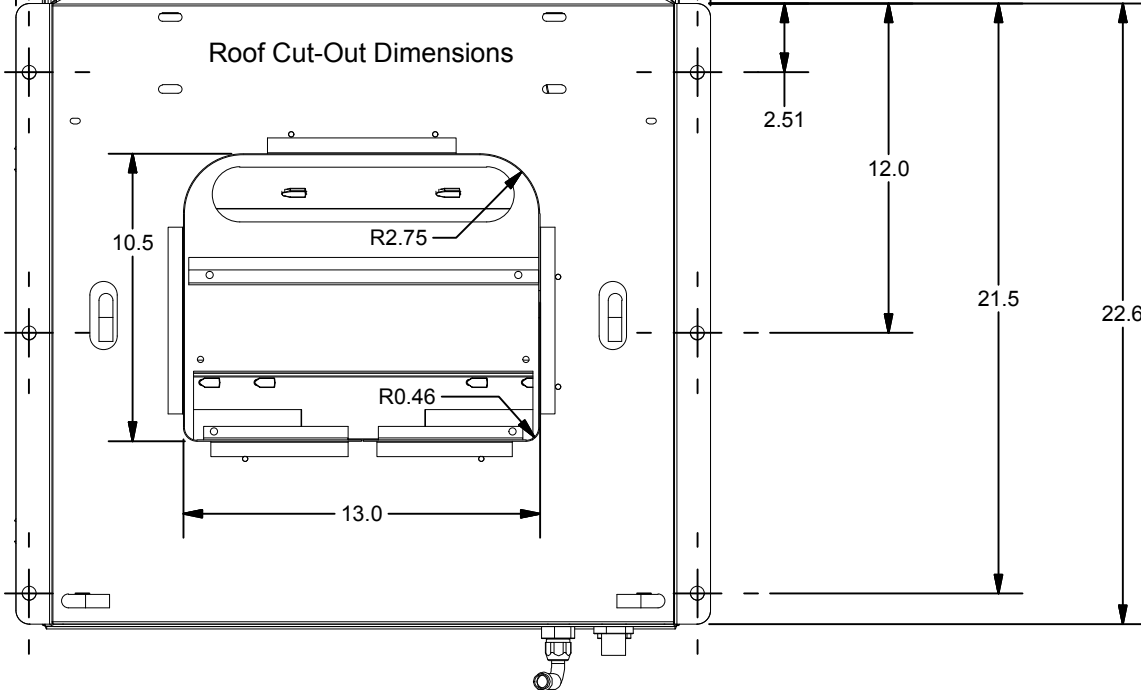


# 702 FOOTPRINT AND MOUNTING INFORMATION




**Mounting Hole Spacing**

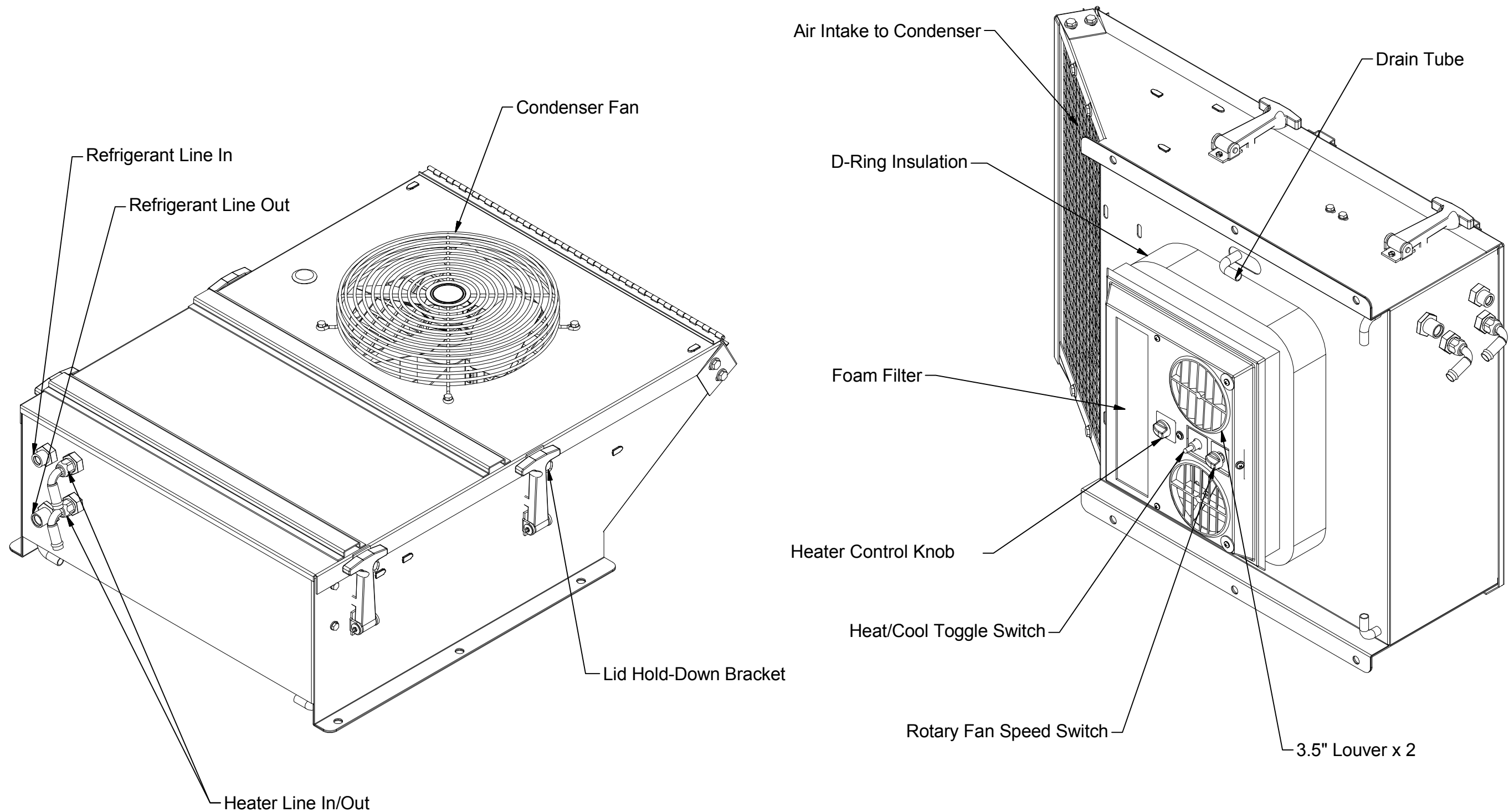



NOTE: View shown with insulation, louver, and switch assembly removed

Mounting Specifications	
Quantity	Description
6	1/2" DIA HOLE- NO THREADS

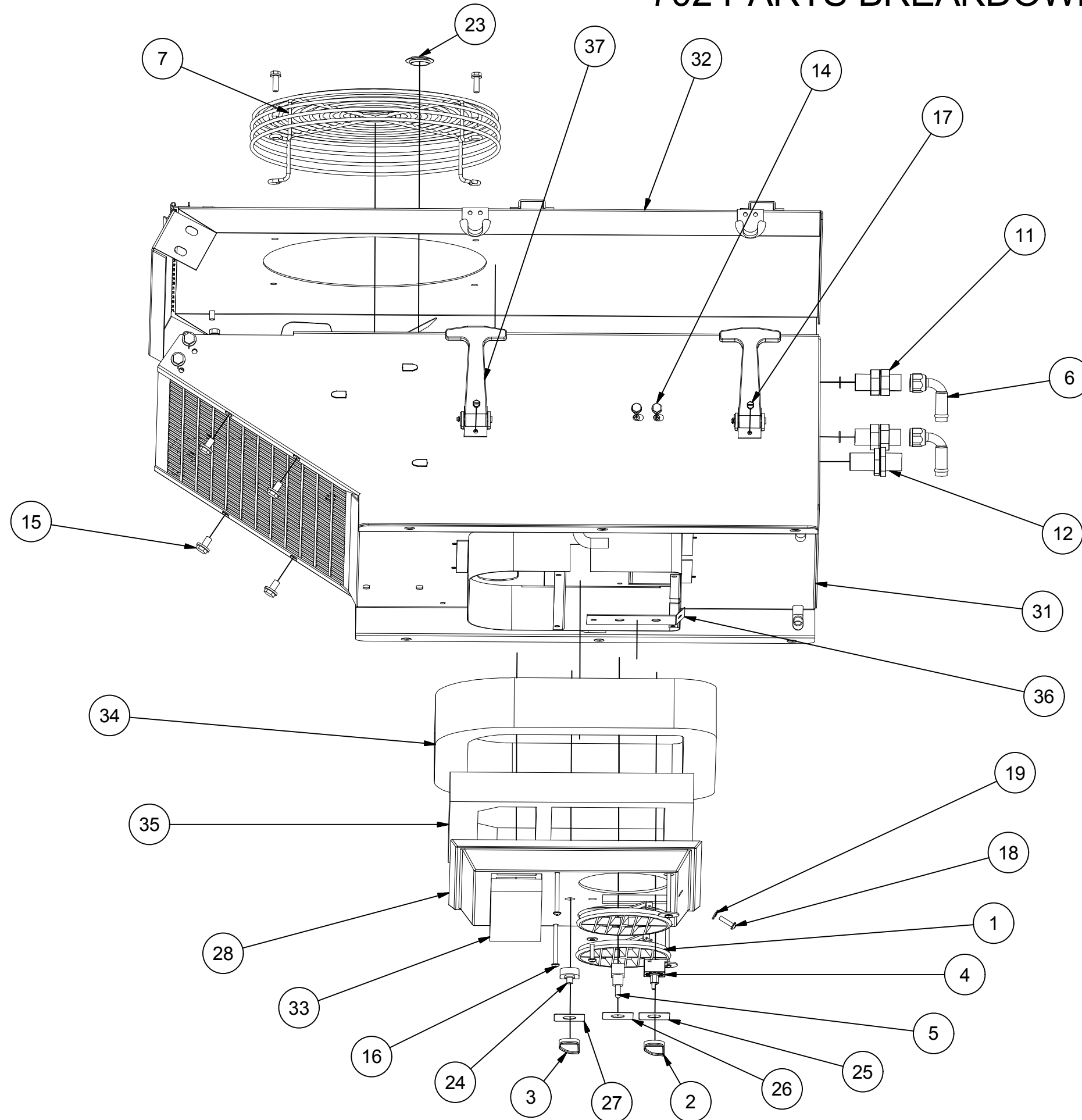
		DTAC- HEAVY EQUIPMENT HEAT/COOL SYSTEMS	
		TITLE 702 FOOTPRINT AND MOUNTING INFORMATION	
MODELED JSHAW		DWG NAME 702 Drawings.idw	
DRAWN jhamaker	6/8/2012	SIZE B	NOTE: ALL UNITS IN INCHES

# 702 FEATURE SPECIFICATIONS




		DTAC- HEAVY EQUIPMENT HEAT/COOL SYSTEMS	
		TITLE 702 FEATURE SPECIFICATIONS	
MODELED		DWG NAME 702 Drawings.idw	
JSHAW			
DRAWN	6/8/2012	SIZE B	NOTE: ALL UNITS IN INCHES
jhamaker			SHEET 2 OF 5

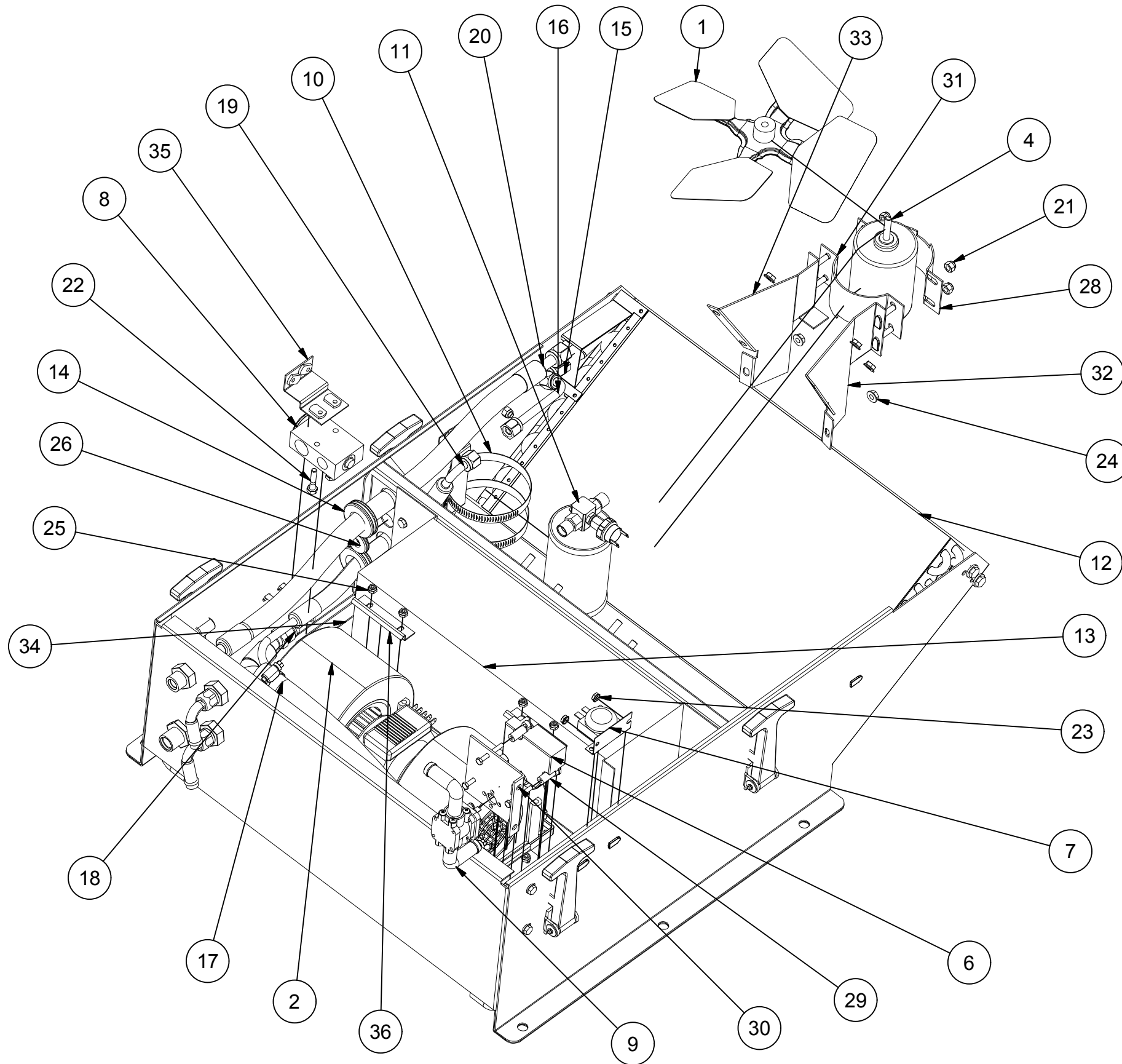
# 702 PARTS BREAKDOWN 1



Parts Breakdown 1- Exterior Parts				
ITEM	QTY	DTAC NO.	DESCRIPTION	NOTE
1	2	02-16065	Louver	
2	1	03-00165	Knob	
3	1	03-00166	Metric Knob	
4	1	03-13006	Rotary 3 Speed Switch	
5	1	03-13020	Toggle Switch	
6	4	05-00301	90 Degree Heater Fitting	
7	1	07-36008	Grille	
8	5	09-04011	#6 O-Ring	1
9	8	09-04012	#8 O-Ring	1
10	2	09-04013	#10 O-Ring	1
11	3	09-50004	#8 MIO Bulkhead w Jam Nut	
12	1	09-50005	#10 MIO Bulkhead w Jam Nut	
13	15 ft	10-20012	Drain Hose	1
14	12	12-00002	1/4-20 X 3/4 Whiz Flange Bolt	
15	8	12-00045	5/16-18 X 1/2 Whiz Flange Bolt	
16	4	12-00047	Pan Head, 10-32 - 3	
17	8	12-00049	Slotted Hex Head Machine Screw	
18	2	12-00050	Pan Head, 10-32 - .75	
19	2	12-00104	10-24 Flatwasher	
20	2	12-00123	Kazzoo Tube	1
21	1	12-00702	Wire Harness	1
22	1	12-01874	1/2" Plastic Tee	1
23	1	12-02783	1" Button Plug	
24	1	12-43411	Actuator, Wire Harness	
25	1	12-50420	Face Plate - Heat/Cool	
26	1	12-50421	Face Plate - Air Increase	
27	1	12-50741	Face Plate - H/C Water Valve	
28	1	70-00001	Plenum	
29	1	70-00004	Template 700 Evap	1
30	1	70-00005	Adhesive Tube 700 Evap	1
31	1	70-20000	Bottom Housing	
32	1	70-20001	Lid	
33	1	70-50321	Foam Filter	
34	1	70-50323	D-Ring Insulation	
35	1	70-50324	Foam Insulation	
36	1	70-51585	Switch Panel	
37	4	70-51595	Hood Latch	
-	-	Note 1	Part not shown	

 <b>DTAC</b> ®		DTAC- HEAVY EQUIPMENT HEAT/COOL SYSTEMS	
		TITLE 702 PARTS BREAKDOWN 1	
MODELED JSHAW		DWG NAME 702 Drawings.idw	
DRAWN jhamaker	6/8/2012	SIZE B	NOTE: ALL UNITS IN INCHES
			SHEET 3 OF 5

# 702 PARTS BREAKDOWN 2 AND UNIT SPECIFICATIONS

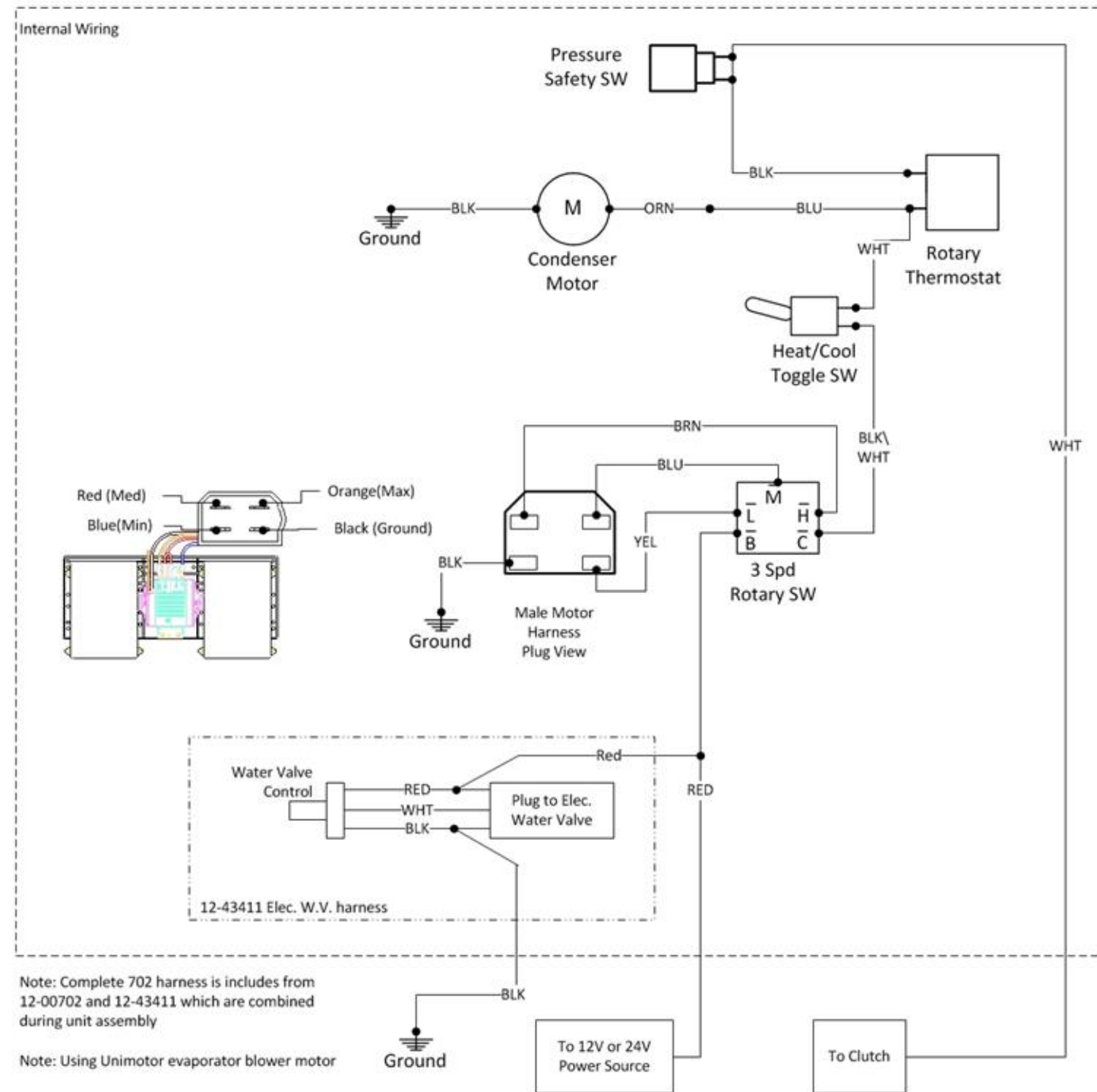


Parts Breakdown 2- Interior Parts					
ITEM	QTY 1	QTY 2	DTAC NO.	DESCRIPTION	NOTE
1	1	1	02-16008	Fan Blade	
2	1	0	02-17408	12V Blower Assy.	
3	0	1	02-17509	24V Blower Assembly	
4	1	0	02-48005	12V Cond. Motor	
5	0	1	02-48105	24V Cond. Motor	
6	1	1	03-13027	Actuator Control	
7	1	1	03-14013	Preset Thermostat	
8	1	1	04-15004	Block Expansion Valve	
9	1	1	05-00908A	Water Valve Assy.	
10	1	1	06-10107	Drier Brkt	
11	1	1	06-12067	Drier	
12	1	1	07-00701	Cond Coil	
13	1	1	07-00702	Heat/Cool Evaporator Coil	
14	3	3	09-00621	One Inch Grommet	
15	1	1	09-02676BL	#6 FM to Male Adapter	
16	1	1	09-38276	No.6 Spec Fitting	
17	3	3	10-00058	5/8" Heater Hose	
18	1	1	10-70210	#10 Hose Assembly	
19	1	1	10-70206	#6 Hose Assembly	
20	1	1	10-70208	#8 Hose Assembly	
21	8	8	12-00001	1/4 - 20 Nylon Nut	
22	2	2	12-00021	1/4-20 x 1.25 Hex Bolt	
23	2	2	12-00041	10-24 Keps Nut	
24	8	8	12-00057	1/4-20 Whiz Nut	
25	8	8	12-00061	10-24 Nylock Nut	
26	1	1	12-00116	One Inch Grommet	
27	1	1	12-00128	Water Valve Coupling	1
28	1	1	12-00130	Top Motor Mount	
29	3	3	12-00131	Spacer	
30	1	1	12-00240	WV Brkt	
31	1	1	40-00005	Bottom Motor Mount	
32	1	1	70-00006	Cond Motor Brkt-Left	
33	1	1	70-00007	Cond Motor Brkt-Right	
34	1	1	70-20002	Drain Pan 702	
35	1	1	70-51587	Block Vlv Brkt	
36	4	4	70-51590	Blower Retainer Bracket	
-	-	-	Note 1	Part not shown	

UNIT SPECIFICATIONS						
BTU'S COOL	BTU'S HEAT	AIR FLOW	WEIGHT	MOTOR	CURRENT DRAW	DTAC NO.
23,500	15,500	345 CFM	100 LBS	1-12V	27 AMPS @ 13.5 VDC	702-12
"	"	"	"	1-24V	14 AMPS @ 26.8 VDC	702-24

<b>DTAC</b>		DTAC- HEAVY EQUIPMENT HEAT/COOL SYSTEMS	
MODELED		TITLE	
JSHAW		702 PARTS BREAKDOWN 2 AND UNIT SPECIFICATIONS	
DRAWN		DWG NAME	
jhamaker		702 Drawings.idw	
6/8/2012		SIZE	
		B	
		NOTE: ALL UNITS IN INCHES	
		SHEET 4 OF 5	

# 702 Series Wiring Diagram



Note: Complete 702 harness is includes from 12-00702 and 12-43411 which are combined during unit assembly

Note: Using Unimotor evaporator blower motor

Caution: Do not change length of water valve wiring harness. Harness contains a resistor calibrated to a length of 14 feet.



Manufacturer of Heavy Equipment Heat/Cool Systems  
5130 Edgefield Ln, TX 76065 USA  
Phone 1-800-527-9477 Fax 1-800-299-5972  
www.dtac.com

70-00702 & 12-43411  
06.07.12

SIZE  
B

SHEET 5 OF 5