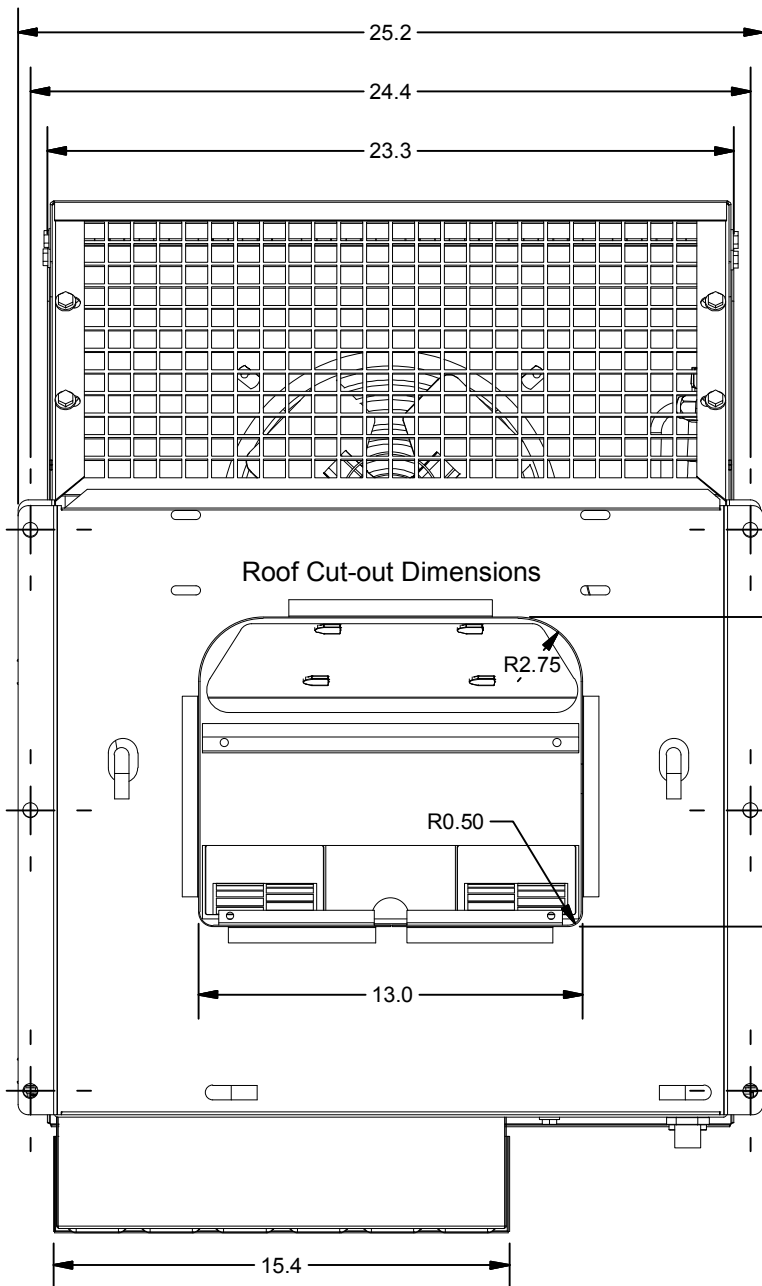
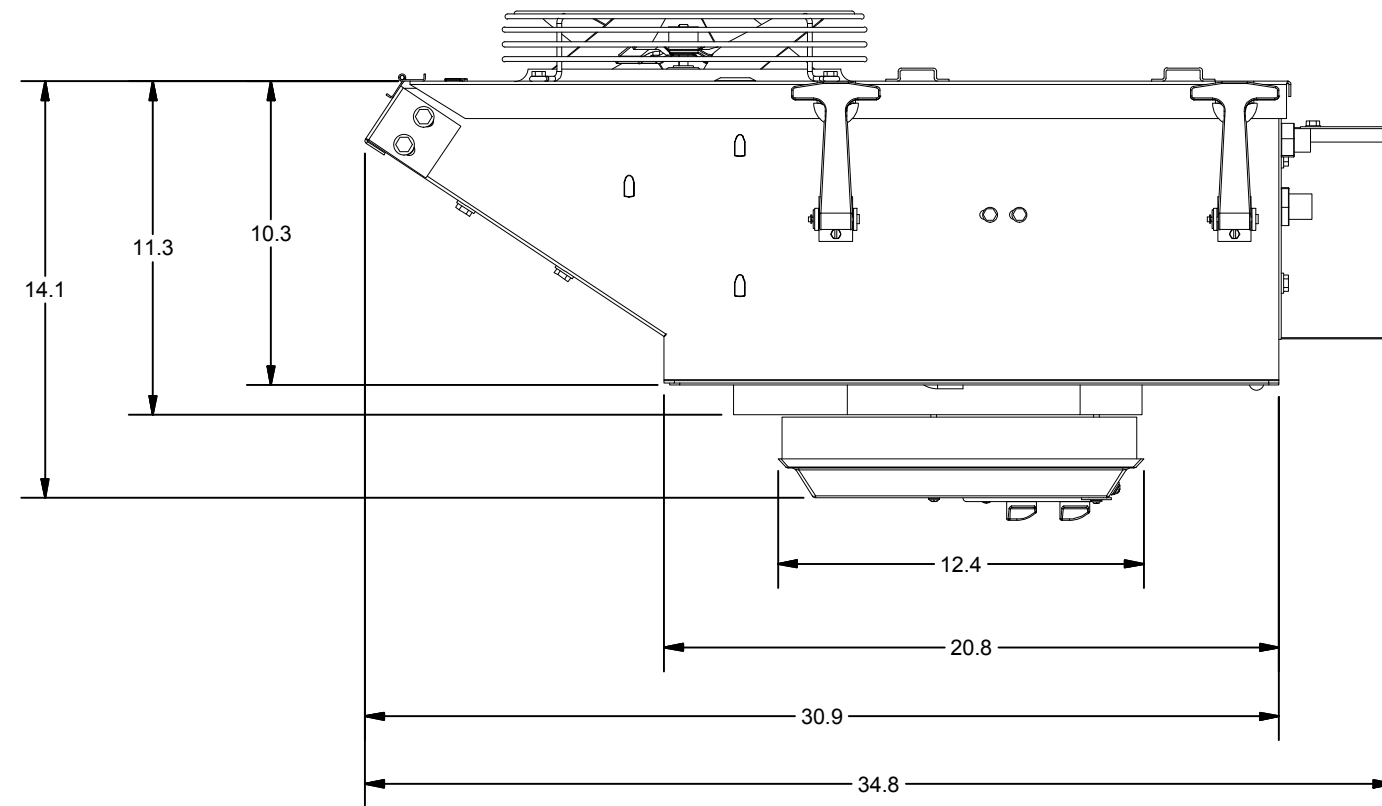
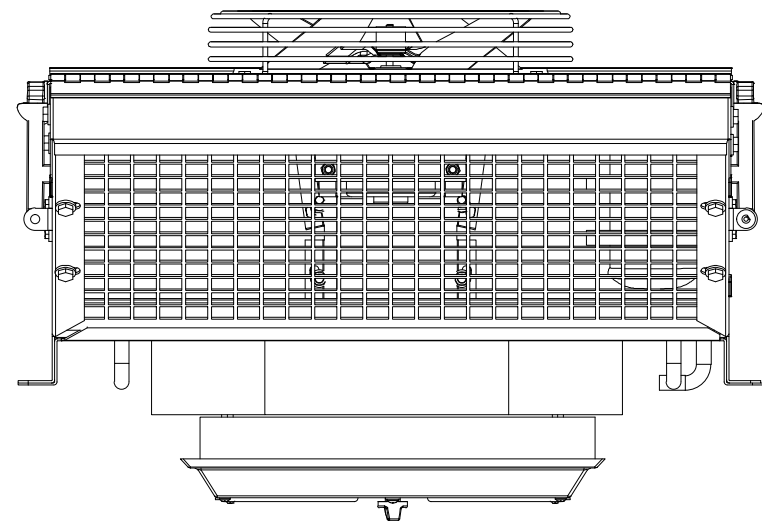
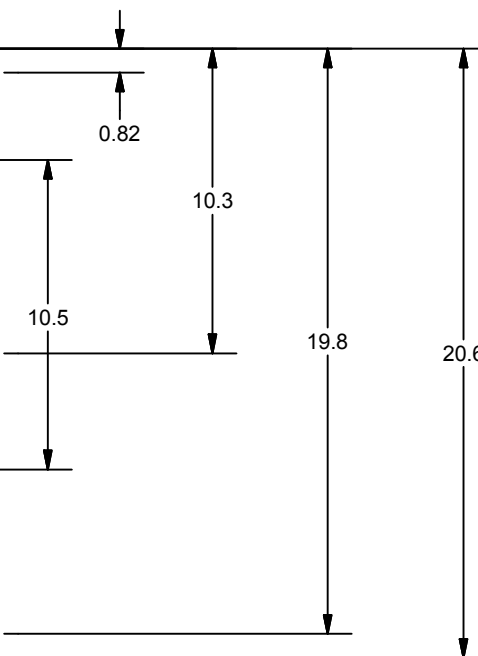


706 FOOTPRINT AND MOUNTING INFORMATION



NOTE: View shown with insulation, louver and switch assembly removed

Mounting Hole Spacing



Mounting Specifications	
Quantity	Description
6	1/2" DIA HOLE- NO THREADS



DTAC- HEAVY EQUIPMENT HEAT/COOL SYSTEMS

TITLE
706 FOOTPRINT AND MOUNTING INFORMATION

MODELED

JSHAW

DRAWN

jhamaker

DWG NAME

706 Drawings.idw

SIZE

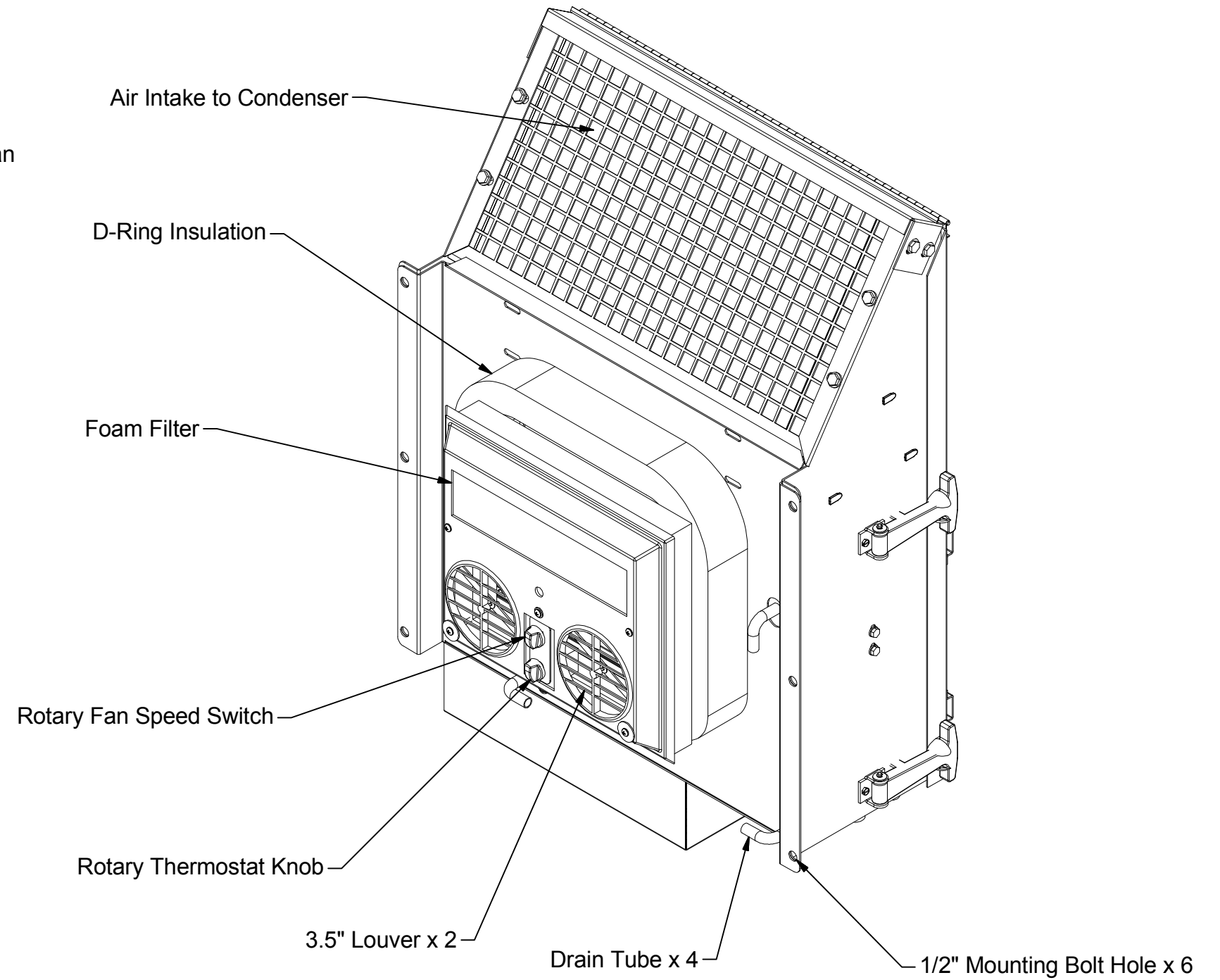
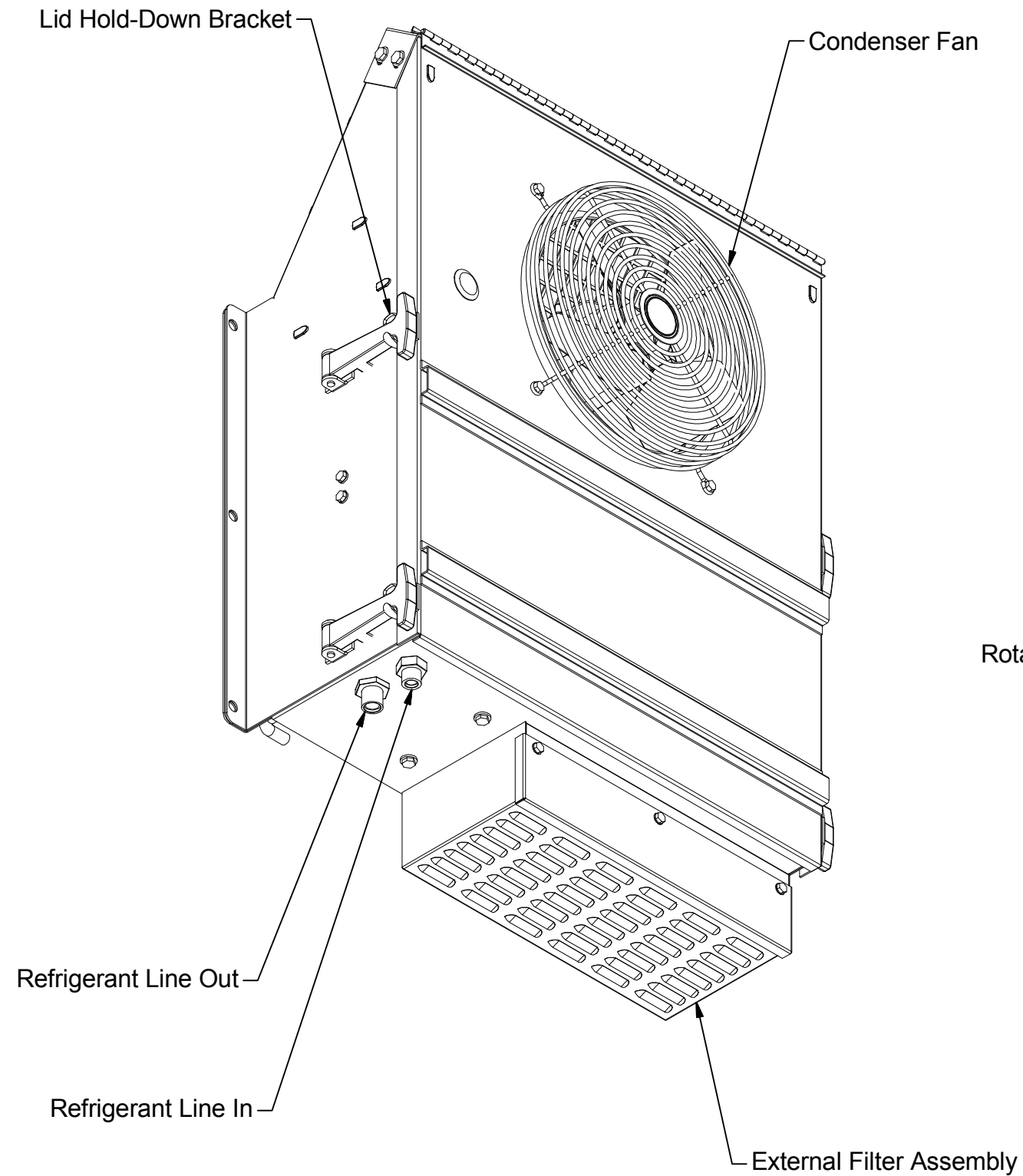
B

8/26/2011


NOTE: ALL UNITS IN INCHES

SHEET 1 OF 5

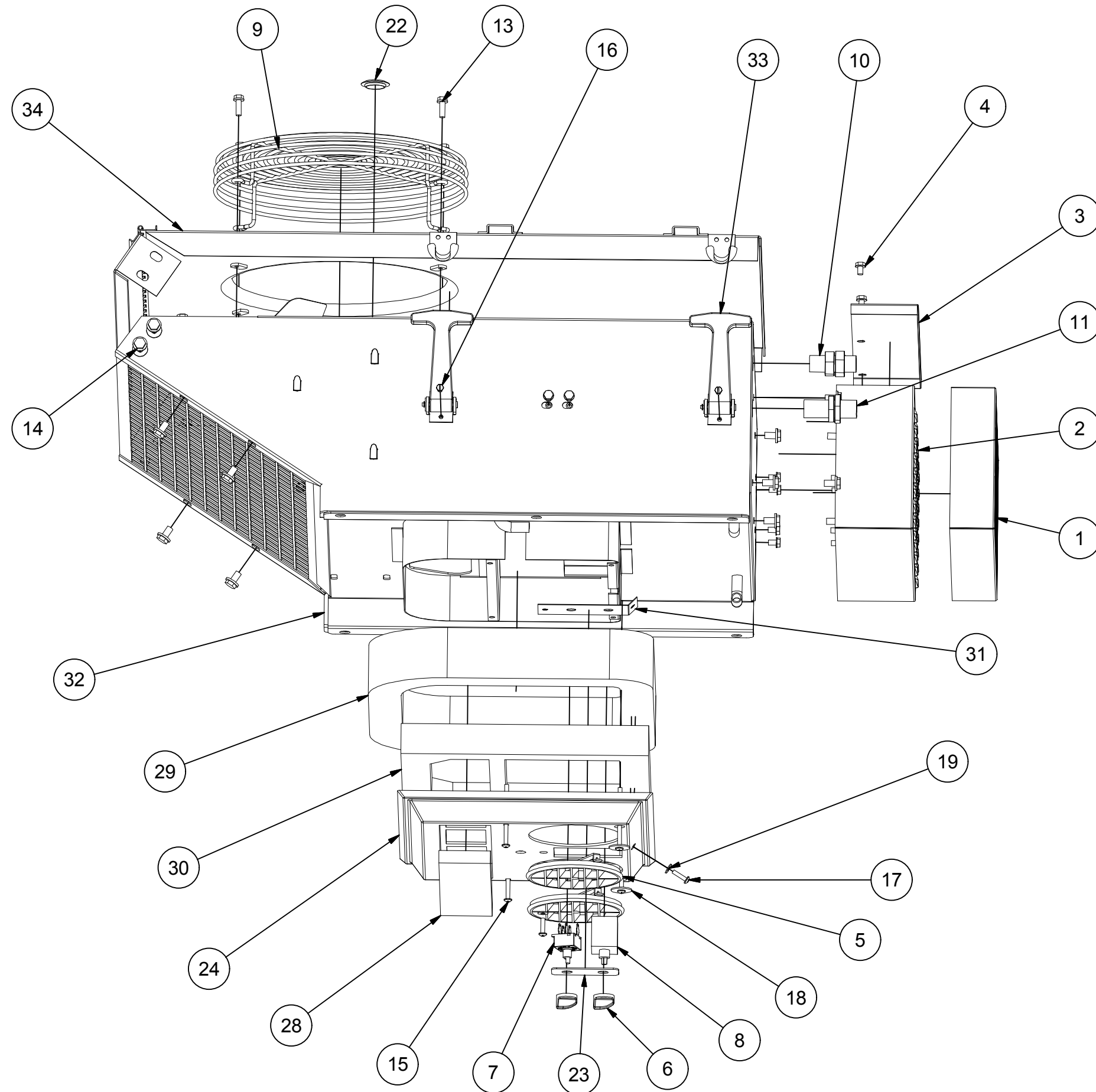
706 FEATURE SPECIFICATIONS



NOTE: Similar to 701, but with external filter assembly

		DTAC- HEAVY EQUIPMENT HEAT/COOL SYSTEMS	
		TITLE 706 FEATURE SPECIFICATIONS	
MODELED JSHAW		DWG NAME 706 Drawings.idw	
DRAWN jhamaker	8/26/2011	SIZE B	NOTE: ALL UNITS IN INCHES

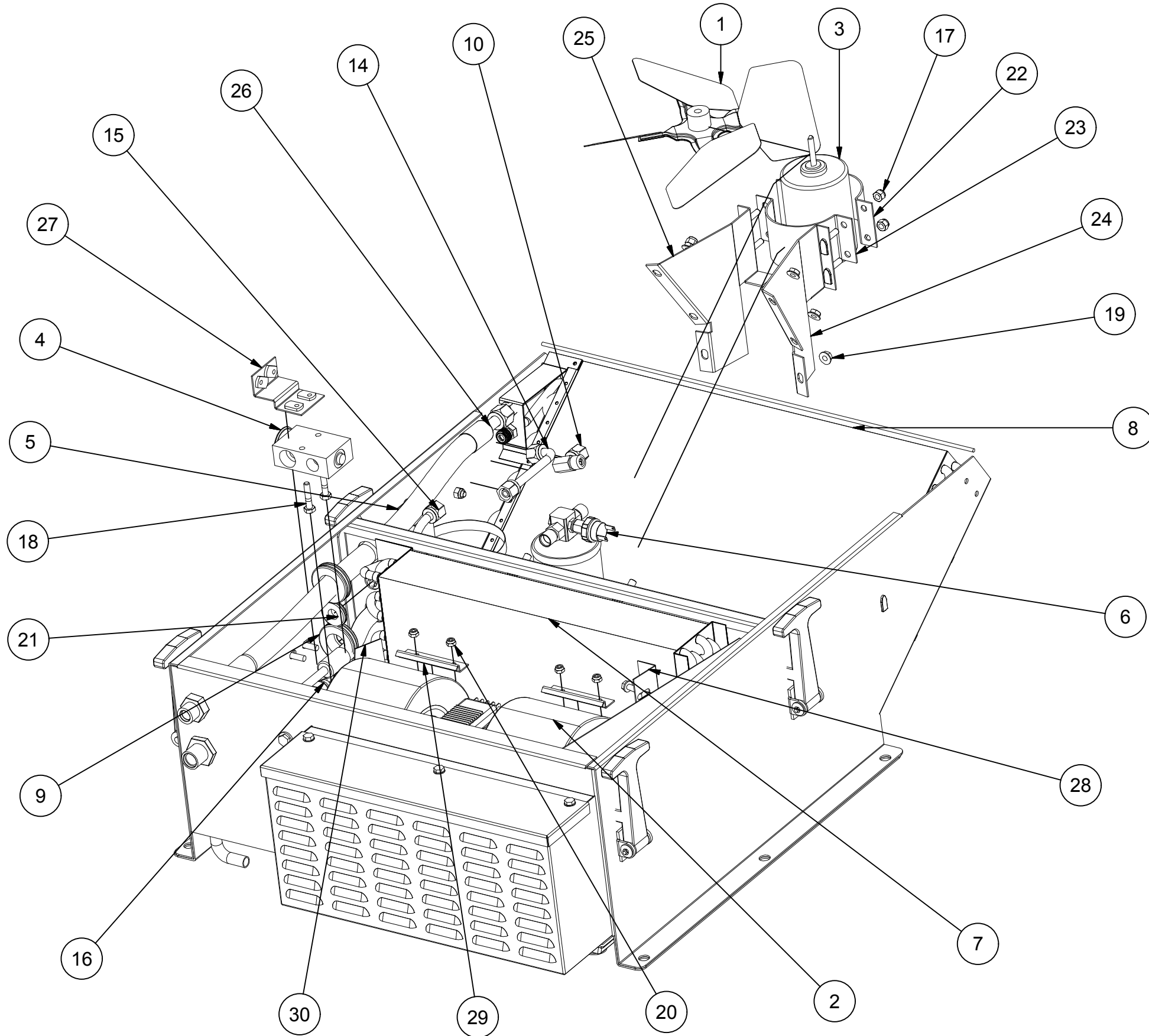
706 PARTS BREAKDOWN 1



Parts Breakdown				
ITEM	QTY	DTAC NO.	DESCRIPTION	NOTE
1	1	11-37523	Filter Element	
2	1	11-52109	Filter Housing	
3	1	11-52110	Filter Lid 706	
4	7	12-00003	1/4-20 X 3/8 Bolt	
5	2	02-16065	Louver	
6	2	03-00165	Knob	
7	1	03-13006	Rotary 3-Speed Switch	
8	1	03-14003	Rotary Thermostat	
9	1	07-36008	Grille	
10	1	09-50004	#8 MIO Bulkhead w Jam Nut	
11	1	09-50005	#10 MIO Bulkhead w Jam Nut	
12	15.00 ft	10-20012	Drain Hose	1
13	10	12-00002	1/4-20 X 3/4 Whiz Flange Bolt	
14	12	12-00045	5/16-18 X 1/2 Whiz Flange Bolt	
15	4	12-00047	Pan Head, 10-32 - 3	
16	8	12-00049	Slotted Hex Head Machine Screw	
17	2	12-00050	Pan Head, 10-32 - .75	
18	2	12-00101	Washer	
19	2	12-00104	10-24 Flatwasher	
20	2	12-00123SP	Drain Kazoo	1
21	1	12-01874	1/2" Plastic Tee	1
22	1	12-02783	1" Button Plug	
23	1	12-50419	Faceplate	
24	1	70-00001	Plenum	
25	1	70-00004	Template	1
26	1	70-00005	Adhesive Tube	1
27	1	70-00016	Wire Harness	1
28	1	70-50321	Foam Filter	
29	1	70-50323	D-Ring Insulation	
30	1	70-50324	Foam Insulation	
31	1	70-51585	Switch Panel	
32	1	70-51594	Bottom Housing, 701	
33	4	70-51595	Hood Latch	
34	1	70-51599	701 Lid	
-	-	Note 1	Part not shown	

DTAC		DTAC- HEAVY EQUIPMENT HEAT/COOL SYSTEMS	
		TITLE 706 PARTS BREAKDOWN 1	
MODELED JSHAW		DWG NAME 706 Drawings.idw	
DRAWN jhamaker	8/26/2011	SIZE B	NOTE: ALL UNITS IN INCHES
			SHEET 3 OF 5

706 PARTS BREAKDOWN 2 AND UNIT SPECIFICATIONS



Parts Breakdown				
ITEM	QTY	DTAC NO.	DESCRIPTION	NOTE
1	1	02-16008	Fan Blade	
2	1	02-17408	12V Blower Assy.	
3	1	02-48005	Condenser Motor	
4	1	04-15004	Block Expansion Valve	
5	1	06-10107	Drier Brkt	
6	1	06-12067	Drier	
7	1	07-00700	Evap Coil	
8	1	07-00701	Cond Coil	
9	2	09-00621	One Inch Grommet	
10	1	09-02676BL	#6 FM to Male Adapter	
11	5	09-04011	#6 O-Ring	1
12	4	09-04012	#8 O-Ring	1
13	2	09-04013	#10 O-Ring	1
14	1	09-38276	No.6 Spec Fitting	
15	1	10-10700	No. 6 Hose Assy	
16	1	10-59297X	No. 10 Hose Assy	
17	9	12-00001	1/4 - 20 Nylon Nut	
18	2	12-00021	1/4-20 x 1.25 Hex Bolt	
19	8	12-00057	1/4-20 Whiz Nut	
20	9	12-00061	10-24 Nylock Nut	
21	1	12-00116	One Inch Grommet	
22	1	12-00130	Motor Mount Top	
23	1	40-00005	Motor Mount Bottom	
24	1	70-00006	Motor Mount Left	
25	1	70-00007	Motor Mount Right	
26	1	70-00102	No. 8 Hose Assy	
27	1	70-51587	Block Vlv Brkt	
28	1	70-51589	Coil Brkt	
29	4	70-51590	Blower Retainer Bracket	
30	1	70-51591	Drain Pan 701	
-	-	Note 1	Part not shown	

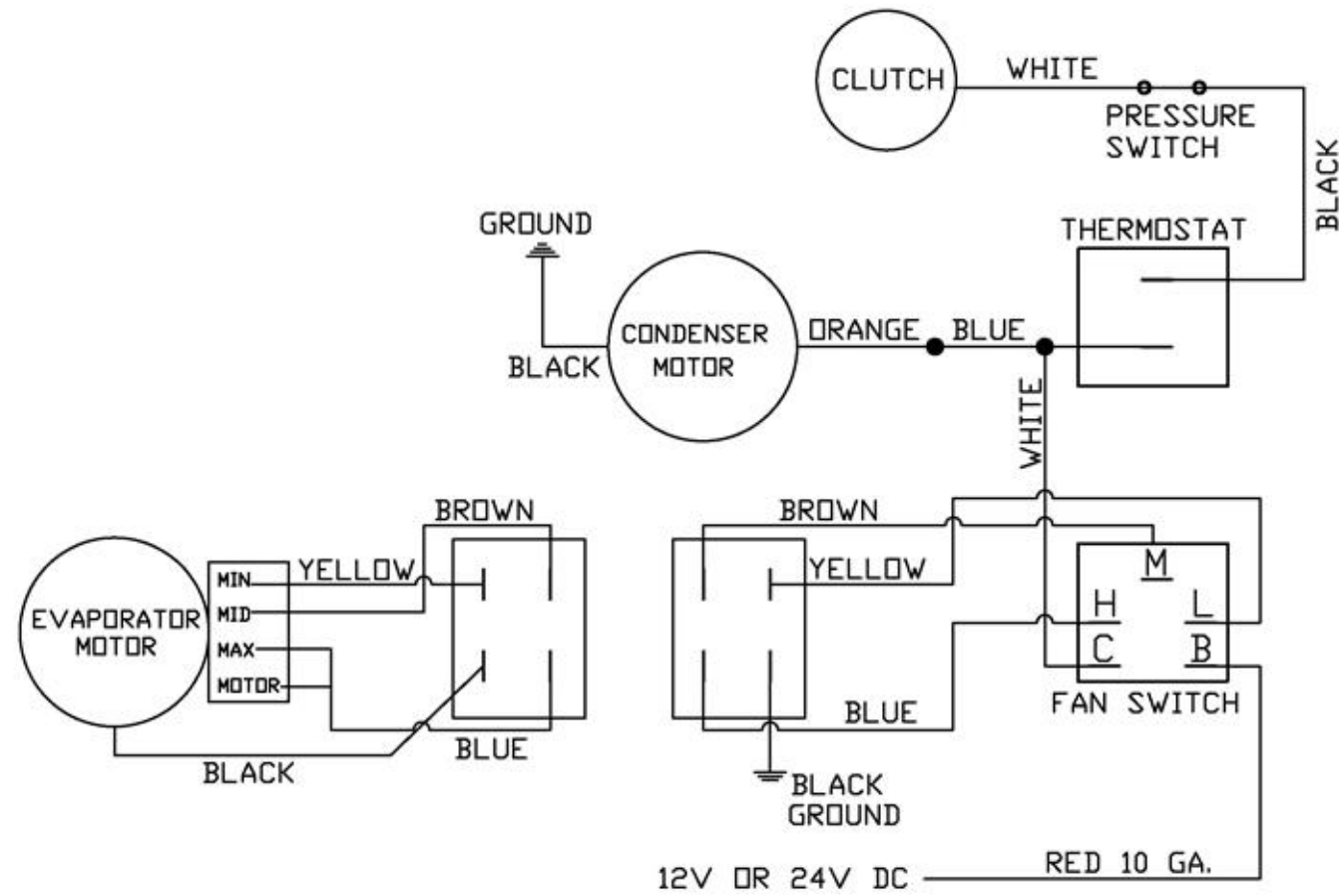
UNIT SPECIFICATIONS						
BTU'S COOL	BTU'S HEAT	AIR FLOW	WEIGHT	MOTOR	CURRENT DRAW	DTAC NO.
23,500	-	345 CFM	100 LBS	1-12V	27 AMPS @ 13.5 VDC	706-12

DTAC [®]	DTAC- HEAVY EQUIPMENT HEAT/COOL SYSTEMS	
	TITLE 706 PARTS BREAKDOWN 2 AND UNIT SPECIFICATIONS	
MODELED JSHAW	DWG NAME 706 Drawings.idw	
DRAWN jhamaker	8/26/2011	SIZE B
NOTE: ALL UNITS IN INCHES		SHEET 4 OF 5



701-12/24, Evaporator Wiring Schematic

(same wiring used for 706)



Manufacturer of Heavy Equipment Heat/Cool Systems
5130 Edgefield Lane, Midlothian, TX 76065 USA
Phone 1-800-527-9477 Fax 1-800-299-5972
www.dtac.com

04/15/2008

SIZE
B

SHEET 5 OF 5