



REMOTE CONDENSERS

36002-A Series

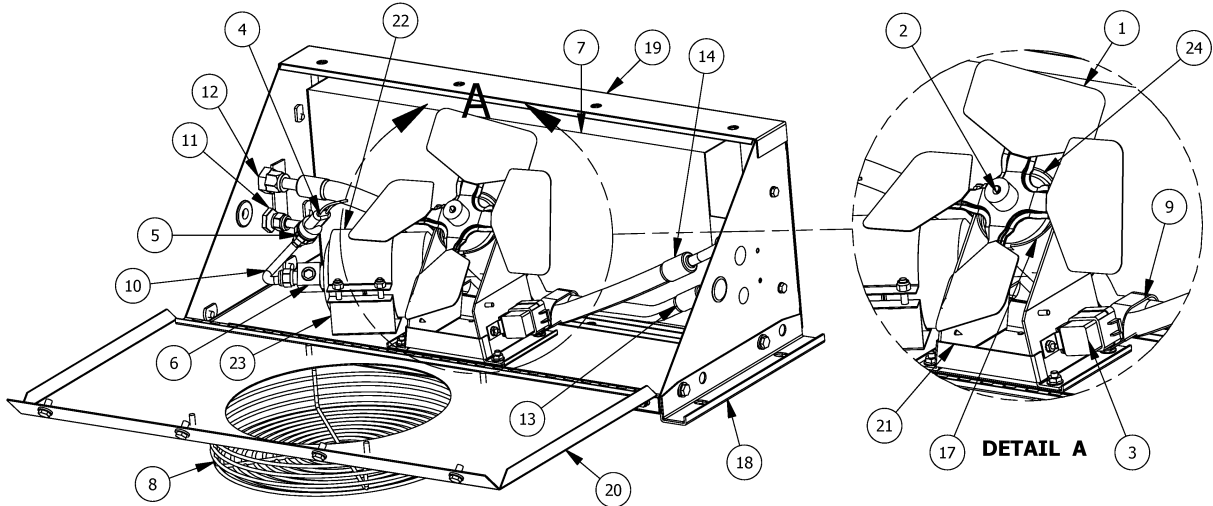
Remote Mount Condenser with Drier & Water Proof Relay

REMOTE CONDENSERS



FEATURES

- Available 12 or 24 Volt
- Built in Receiver Drier with Pressure Switch
- Single Speed Motor
- One 10" Steel 4 Bladed Fan
- Steel Case with Gray Powder Coat Finish
- **NEW – Includes Water Proof Relay**



07-36002-A Parts List Rev.1					07-36002-A Parts List Rev.1				
ITEM	QTY	DTAC NO.	DESCRIPTION	NOTE	ITEM	QTY	DTAC NO.	DESCRIPTION	NOTE
1	1	02-16008	Fan Blade		14	1	10-36008	#8 Hose Assy.	
2	1	02-48005	12V Cond. Motor		15	1	12-00086FK	HARNES CONV. TO W/P RELAY	1
		02-48105	24V Cond. Motor		16	1	12-00095	Relay Plug Harness	1
3	1	03-01712	12V, 5 Term Water Proof Relay		17	1	12-00130	Top Motor Mount	
		03-01724	24V, 5 Term Water Proof Relay		18	2	36-36003	Mounting Brkt, 36000	
4	1	03-13036	Binary Boot		19	1	36-36004	Bottom Housing 36000	
5	1	03-34070	Binary Pressure Switch		20	1	36-36005	Housing, Lid 36000	
6	1	06-12040	Rec Drier, 78000, 36002		21	1	36-36008	Motor Mount Base	
7	1	07-35001	Condenser Coil		22	1	36-36009	Drier Bracket Top	
8	1	07-36008	Grille		23	1	36-36011	Drier Brkt Base	
9	2	09-04004	Double Hose Clamp- Steel		24	1	40-00005	Top Motor Mount	
10	1	09-37595	Fitting- Drier to Outlet, 36002		25	1	Note 1	Item Not Shown	
11	1	09-50003	#6 MIO Bulkhead w Jam Nut						
12	1	09-50004	#8 MIO Bulkhead w Jam Nut						
13	1	10-36007	#6 Hose Assy						

BTU'S COOL	AIR FLOW	HEIGHT	WIDTH	DEPTH	WEIGHT	MOTOR	CURRENT DRAW	DTAC NO.
33,000	740 CFM	12.15"	29.5"	13.63"	44 LBS	1-12V	12.6 AMPS @ 13.6 VDC	07-36002-12A
"	"	"	"	"	"	1-24V	6.4 AMPS @ 26.8 VDC	07-36002-24A

CONDENSER INSTALLATION TIPS

REMOTE MOUNTED CONDENSER

1. Install condenser with at least 3+free air space in all directions.
2. **DO NOT INSTALL IN THE PATH OF ENGINE EXHAUST.**
3. Install in clean air area if possible.
4. Exhausted air off of condenser should not blow onto cab skin or cab glass.
5. Protective covers over condensers should not restrict airflow.

PREVENTATIVE MAINTENANCE

DTAC strives to manufacture A/C systems of superior quality. However, as with all mechanical equipment, normal maintenance must be performed for youq̄e A/C to function at peak capacity. A well maintained A/C system will save on down time and premature component failures.

Weekly inspections or every 2 days in severe environments should include:

1. Inspect compressor clutch drive belts (tightness, wear).
2. Inspect compressor mounting brackets (bolts, alignment)
3. Inspect mounting hardware on evaporator unit and condenser.
4. Inspect air intake filter. (Clean or replace filter).
5. Inspect evaporator and condenser coils. (Clean using air pressure).
DO NOT USE WATER OR PRESSURE WASHERS
6. Inspect hose and wire harness for proper routing, leaks and wear.

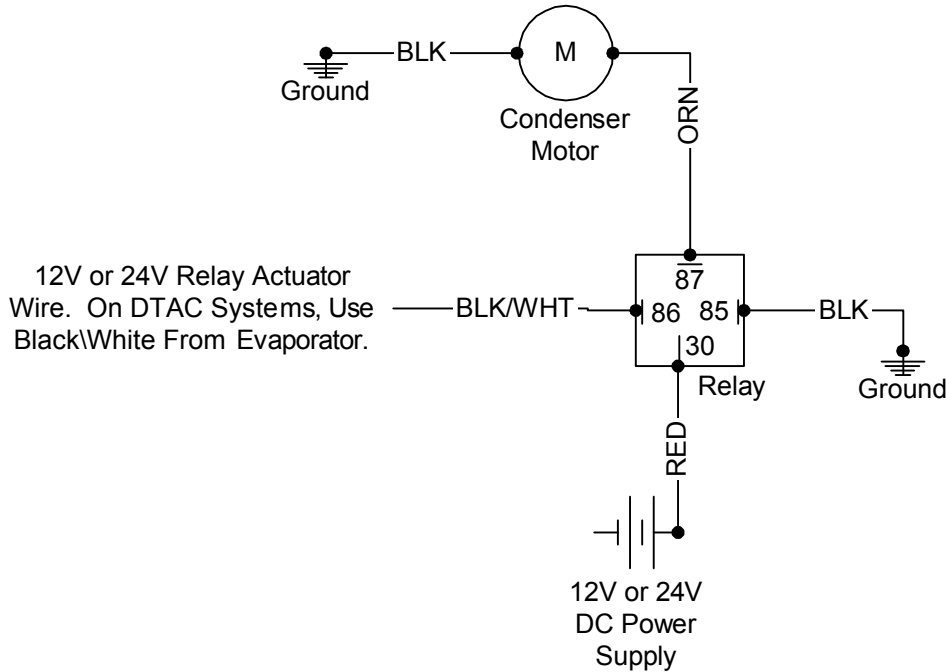
HELPFUL HINTS

Make sure the evaporator air intake area is not obstructed (i.e. toolboxes, clothing, lunch box, etc.)

Manual thermostats on our systems, when rotated clockwise to the stop position will not allow the A/C compressor clutch to cycle. The compressor will run continuously and the evaporator coil will not defrost. **REMEDY:** Turn the manual thermostat knob clockwise to the stop position, then turn the thermostat knob back counter clockwise ¼ turn.

DTAC thanks you for purchasing our units. It is our endeavor to provide you with a quality A/C unit with trouble free service.

07-36002 Series Wiring Diagram



Wire Diagram for Internal Binary Switch on 07-36002 Model Condensers

