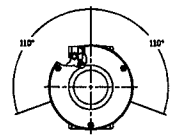
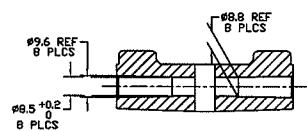


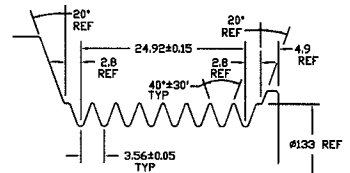
REV	DATE	BY	CHK	APPV
1				
2				
3				
4				
5				
6				
7				
8				
9				
10				
11				
12				
13				
14				
15				
16				



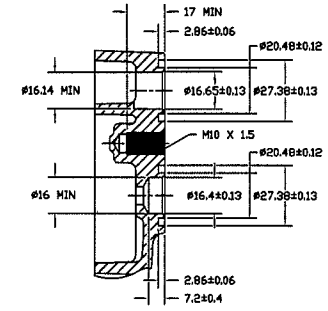
MOUNTING WINDOW



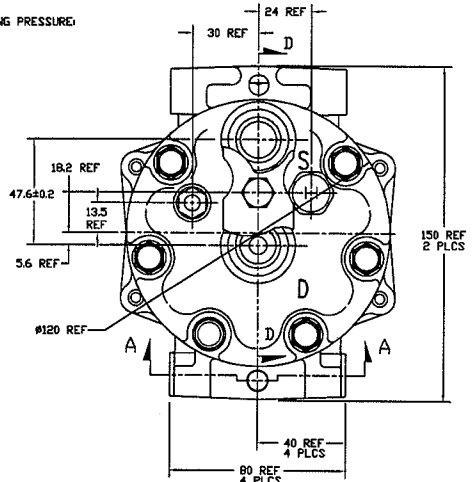
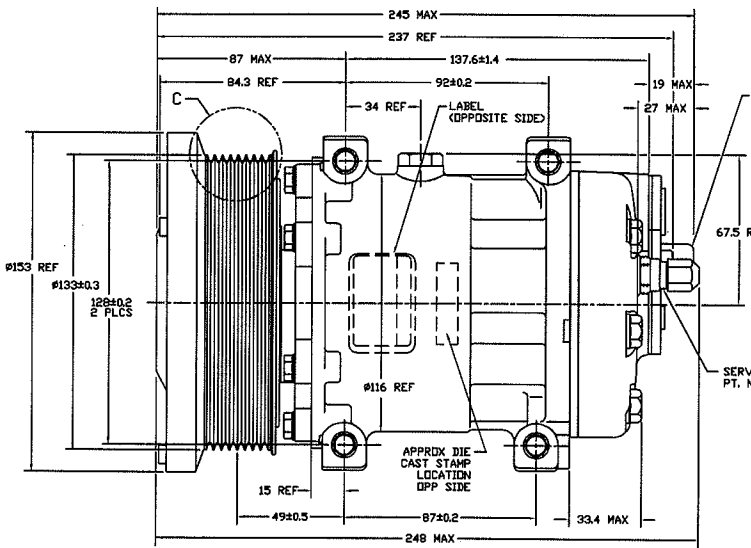
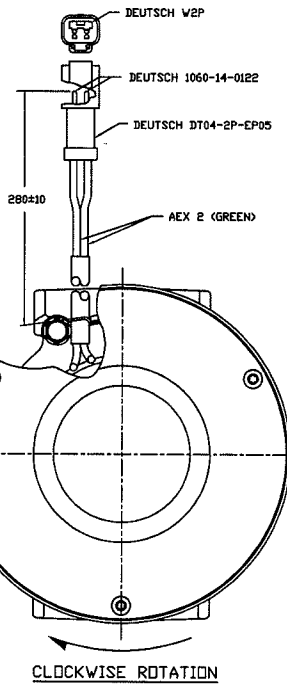
SECTION A-A



DETAIL C
SCALE 3/4



SECTION D-D
(SECTION WITH O-RINGS, SHIPPING PAD ASSEMBLY, AND BELT REMOVED)



COMPRESSOR SPECIFICATIONS

DISPLACEMENT PER REVOLUTION	154.9 cc / rev. (9.5 cu. in./rev.)
MAXIMUM ALLOWABLE R.P.M.	4000 R.P.M.
MAXIMUM ALLOWABLE CONTINUOUS R.P.M.	4000 R.P.M.
REFRIGERANT	R134a
OIL (SP-15)	300 cc (10.1 fl. oz.)
WEIGHT	9.0 kg (19.7 lb.)

CLUTCH SPECIFICATIONS

RATED VOLTAGE	DC 24V
BREAKAWAY TORQUE	3.5 kgf-m min. @ 24V
MINIMUM ENGAGEMENT VOLTAGE	16V @ AIR GAP 0.6mm REF
POWER CONSUMPTION	34 watts max.
BELT TYPE	PV8 TYPE
MAXIMUM ALLOWABLE BELT TENSION	120 kgf
PULLEY DIAMETER	#133mm (5.2 in.)
CLUTCH TYPE	SEALED HEAVY DUTY

PRV OPERATING PRESSURE:
500-600 PSIG

SERVICE VALVE
PT. NO. 4604-0590

APPROX DIE
CAST STAMP
LOCATION
OPP SIDE

SANDEN	
CORPORATION	
10000 WILSON AVENUE, VAN NUYS, CALIF. 91411	
TEL: (818) 708-1111 FAX: (818) 708-1112	
CIRCLE 10 ON READER SERVICE CARD	
METRIC	
This drawing and the information contained herein are the property of Sanden Corporation and shall not be used, copied, or reproduced in any form without the written permission of Sanden Corporation (SANDEN, Inc.).	
INTERPRETATION OF THIS DRAWING PER ASME Y14.2M-1994	
DATE	THIS ANGLE PRELECTION
BY	SIZE
BY	D
BY	INTERNAL
BY	INVC
COMPRESSOR	
DATE	REV
BY	A
BY	4301-6000

DO NOT SCALE

