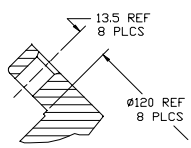
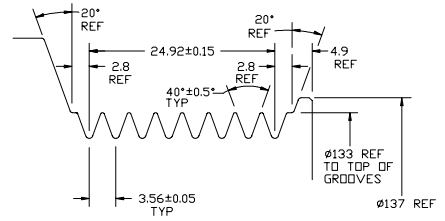


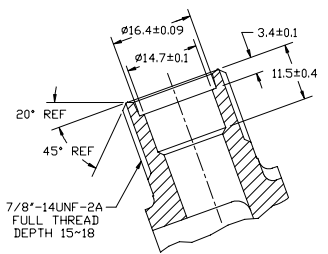
EDN. NO.	REV.	DATE	REVISIONS	DWN	ISSN	CHD	APPR
	▲		INITIAL RELEASE				
200604E	▲	7/15/98	UPDATED TO REFLECT LATEST REVISION OF CYL. HEAD 7832-0450	TG	AA	SN	RM



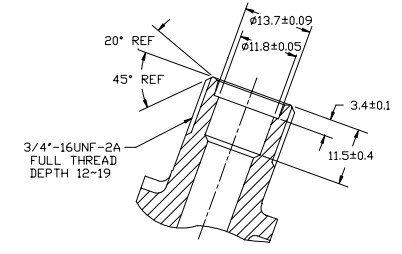
SECTION A-A



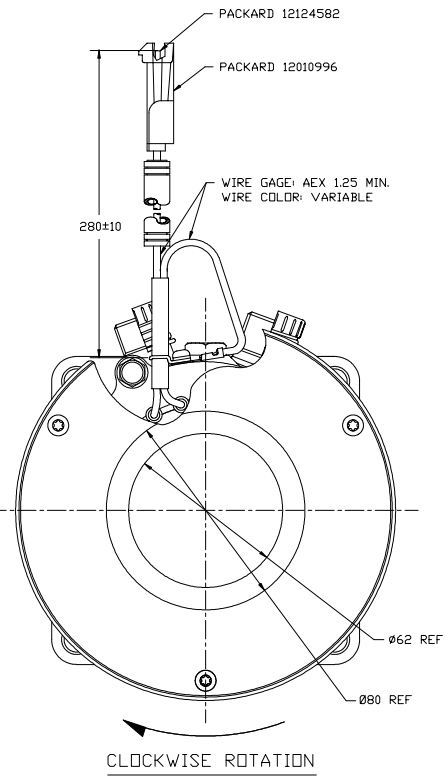
DETAIL B
SCALE: 3:1



SECTION C-C
SCALE: 2:1
(SECTION SHOWN WITH SEAL CAP REMOVED)

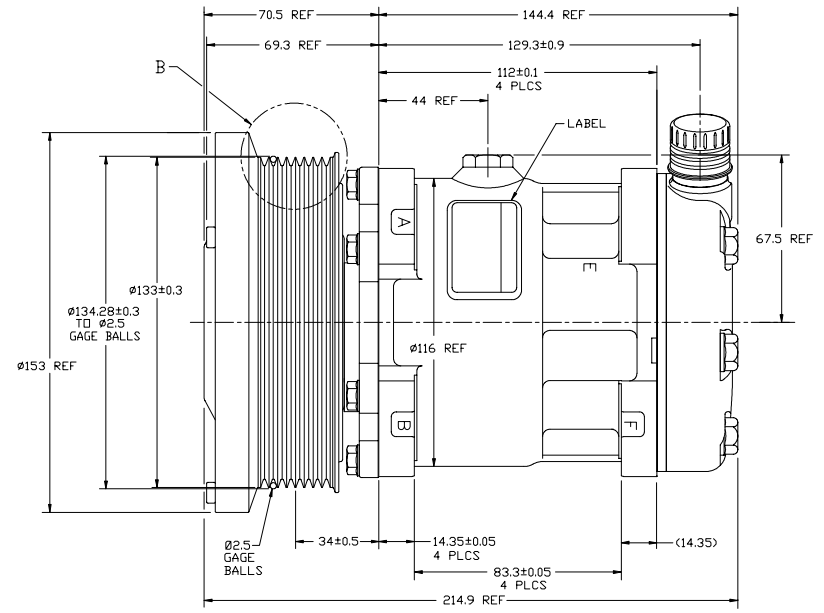


SECTION D-D
SCALE: 2:1
(SECTION SHOWN WITH SEAL CAP REMOVED)



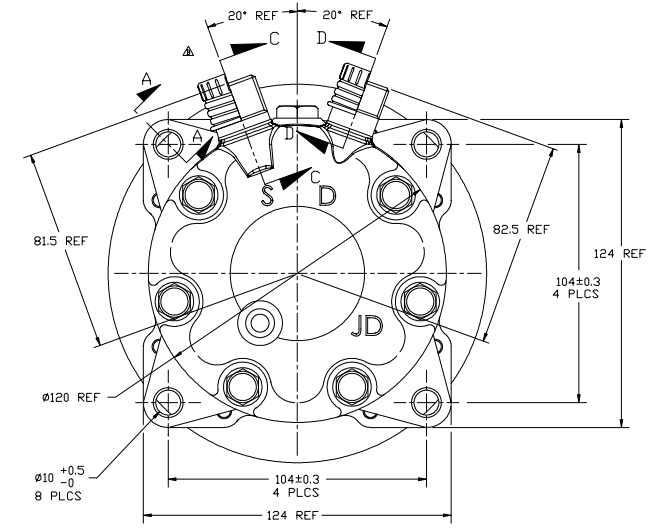
COMPRESSOR SPECIFICATIONS (REF)

DISPLACEMENT PER REVOLUTION	154.9 cc / rev. (9.5cu.in. / rev.)
MAXIMUM ALLOWABLE R.P.M.	4000 R.P.M.
MAXIMUM ALLOWABLE CONTINUOUS R.P.M.	4000 R.P.M.
REFRIGERANT	R134a
OIL (SP-15)	270 cc (9.1 fl. oz.) REF



CLUTCH SPECIFICATIONS

RATED VOLTAGE	DC 24V
BREAKAWAY TORQUE	3.5 kgf-m min. @ 24V
MINIMUM ENGAGEMENT VOLTAGE	16V AT AIR GAP 0.6mm REF
POWER CONSUMPTION	40 watts MAX.
BELT TYPE	FV8 TYPE
MAXIMUM ALLOWABLE BELT TENSION	120 kgf
PULLEY DIAMETER	Ø133mm (5.2 in.)
CLUTCH TYPE	SEALED HEAVY DUTY



- NOTES:
 1. THIS MODEL INCLUDES MAIN SHAFT KEY AND KEYED STANDARD ARMATURE AT TIME OF INITIAL RELEASE.
 2. DIMENSIONS ARE TO VIRTUAL SHARP CORNERS UNLESS OTHERWISE SPECIFIED.

DO NOT SCALE

RELEASED FOR		SANDEN INTERNATIONAL (U.S.A.), INC.	
REV. LEVEL	ISSN	DATE	DESCRIPTION
A	J Sabolowski	7/15/98	INITIAL RELEASE
<p>SANDEN <small>This drawing and the information contained herein are CONFIDENTIAL and PROPRIETARY to Sanden International (U.S.A.), Inc. and shall remain the property of Sanden International (U.S.A.), Inc. and shall not be used, copied, or released to others without the written permission of Sanden International (U.S.A.), Inc.</small></p>			
APPV.	NO	DATE	4/22/94
REV. LEVEL	ISSN	DATE	4/22/94
<p>INTERPRETATION OF THIS DRAWING PER <small>ASME Y14.5M-1994</small></p>			
APPV.	NO	DATE	4/22/94
REV. LEVEL	ISSN	DATE	4/22/94
<p>THIRD ANGLE PROJECTION</p>			
APPV.	NO	DATE	4/22/94
REV. LEVEL	ISSN	DATE	4/22/94
<p>NAME: COMPRESSOR</p>			
APPV.	NO	DATE	4/22/94
REV. LEVEL	ISSN	DATE	4/22/94
<p>DWG. NO. 4312-6000</p>			
			REV. B