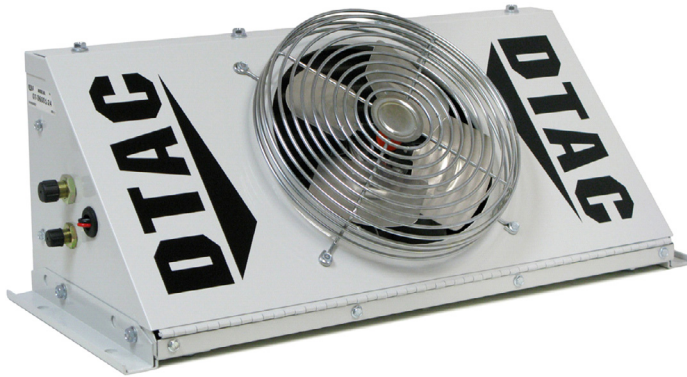




REMOTE CONDENSERS

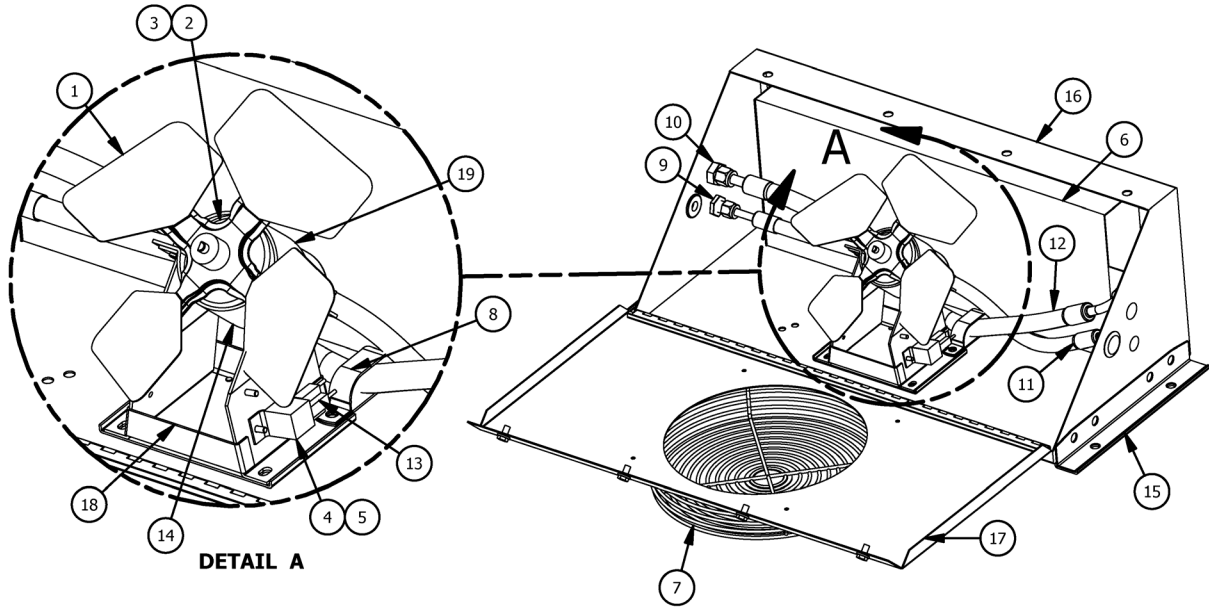
36001 Series

Remote Mount Condenser



FEATURES

- Available 12 or 24 Volt
- Single Speed Motor
- One 10" Steel 4 Bladed Fan
- Steel Case with Gray Powder Coat Finish



REMOTE CONDENSERS

07-36001 PARTS LIST						07-36001 PARTS LIST					
ITEM	QTY 12V	QTY 24V	DTAC NO.	DESCRIPTION	NOTE	ITEM	QTY 12V	QTY 24V	DTAC NO.	DESCRIPTION	NOTE
1	1	1	02-16008	Fan Blade		11	1	1	10-36006	#6 Hose Assy.	
2	1	0	02-48005	12V Cond. Motor		12	1	1	10-36008	#8 Hose Assy.	
3	0	1	02-48105	24V Cond. Motor		13	1	1	12-00095	Wire Harness	
4	1	0	03-01702	12V Relay		14	1	1	12-00130	Motor Mount Brkt	
5	0	1	03-01704	24V Relay		15	2	2	36-36003	Mounting Brkt	
6	1	1	07-35001	07-35001		16	1	1	36-36004	Bottom Housing	
7	1	1	07-36008	Grille		17	1	1	36-36005	Lid 36000	
8	1	1	09-04004	Double Hose Clamp		18	1	1	36-36008	Motor Mount	
9	1	1	09-50003	#6 Bulkhead w Jam Nut		19	1	1	40-00005	Motor Mount Brkt	
10	1	1	09-50004	#8 Bulkhead w Jam Nut							

BTU'S COOL	AIR FLOW	HEIGHT	WIDTH	DEPTH	WEIGHT	MOTOR	CURRENT DRAW	DTAC NO.
33,000	740 CFM	10.5"	29.25"	12.25"	42 LBS	1-12V	12.6 AMPS @ 13.6 VDC	07-36001-12
"	"	"	"	"	"	1-24V	6.4 AMPS @ 26.8 VDC	07-36001-24