



# REMOTE CONDENSERS

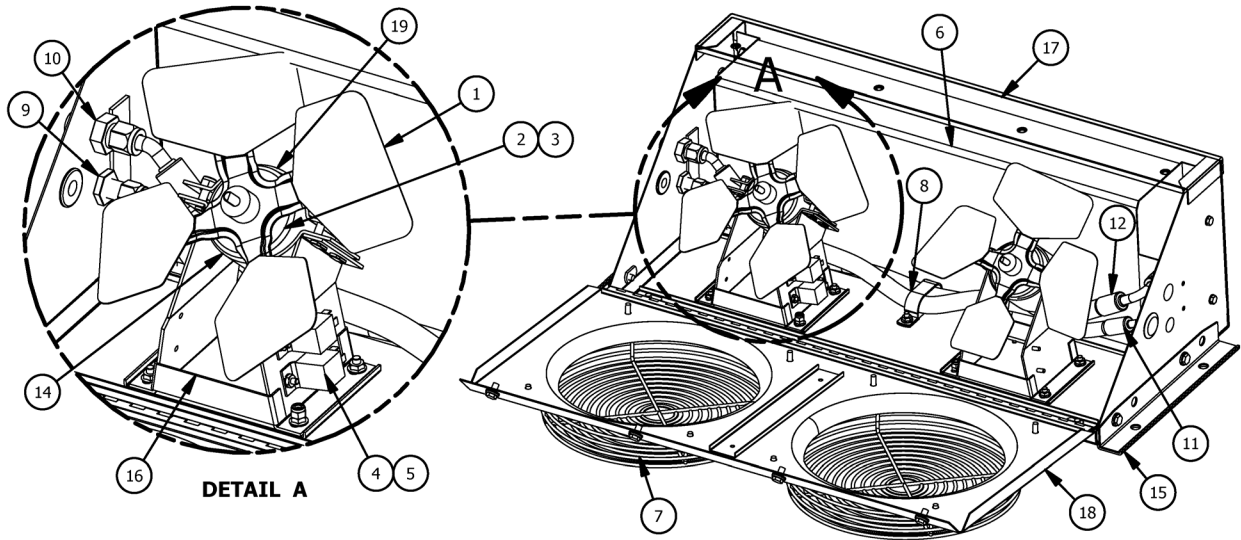
## 36005 Series

Remote Mount Condenser



### FEATURES

- Available 12 or 24 Volt
- Dual Single Speed Motor
- Dual 10" Steel 4 Bladed Fan
- Steel Case with Gray Powder Coat Finish



DETAIL A

07-36005 PARTS LIST						07-36005 PARTS LIST					
ITEM	QTY 12V	QTY 24V	DTAC NO.	DESCRIPTION	NOTE	ITEM	QTY 12V	QTY 24V	DTAC NO.	DESCRIPTION	NOTE
1	2	2	02-16008	Fan Blade		11	1	1	10-36506	#6 Hose Assy.	
2	2	0	02-48005	12V Cond. Motor		12	1	1	10-36508	#8 Hose Assy.	
3	0	2	02-48105	24V Cond. Motor		13	1	1	12-00086	Wire Harness	1
4	2	0	03-01702	12V Relay		14	2	2	12-00130	Motor Mount Brkt	
5	0	2	03-01704	24V Relay		15	2	2	36-36003	Mounting Brkt	
6	1	1	07-36005	07-36005		16	2	2	36-36008	Motor Mount	
7	2	2	07-36008	Grille		17	1	1	36-50000	BTM Housing	
8	1	1	09-04004	Double Hose Clamp		18	1	1	36-50001	Lid Assembly	
9	1	1	09-50003	#6 Bulkhead w Jam Nut		19	2	2	40-00005	Motor Mount Brkt	
10	1	1	09-50004	#8 Bulkhead w Jam Nut		20			NOTE 1	Item Not Shown	

BTU'S COOL	AIR FLOW	HEIGHT	WIDTH	DEPTH	WEIGHT	MOTOR	CURRENT DRAW	DTAC NO.
44,500	1440 CFM	11.75"	32.5"	13.5"	61 LBS	2-12V	25.4 AMPS @ 13.6 VDC	07-36005-12
"	"	"	"	"	"	2-24V	12.8 AMPS @ 26.8 VDC	07-36005-24

REMOTE CONDENSERS