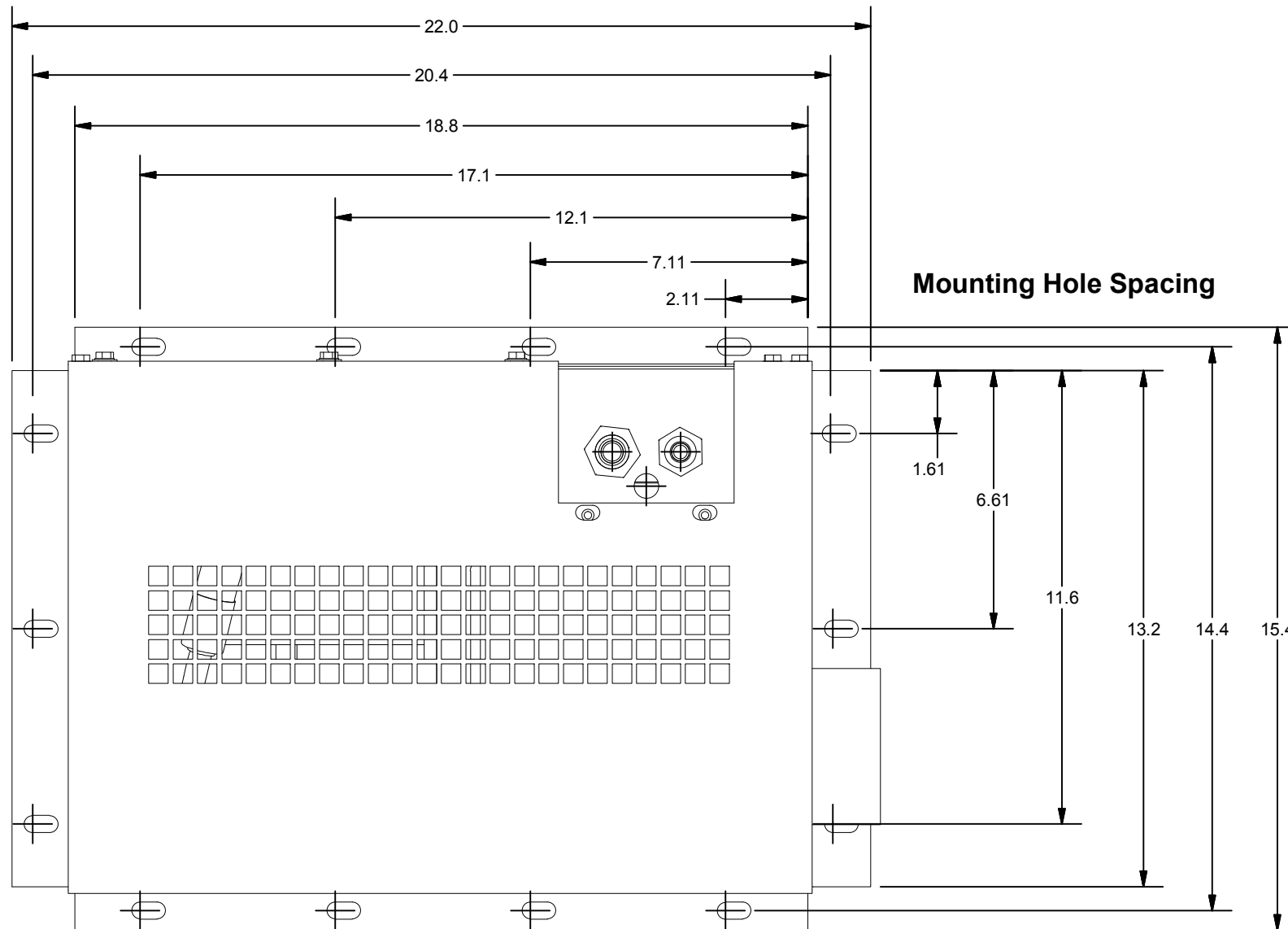
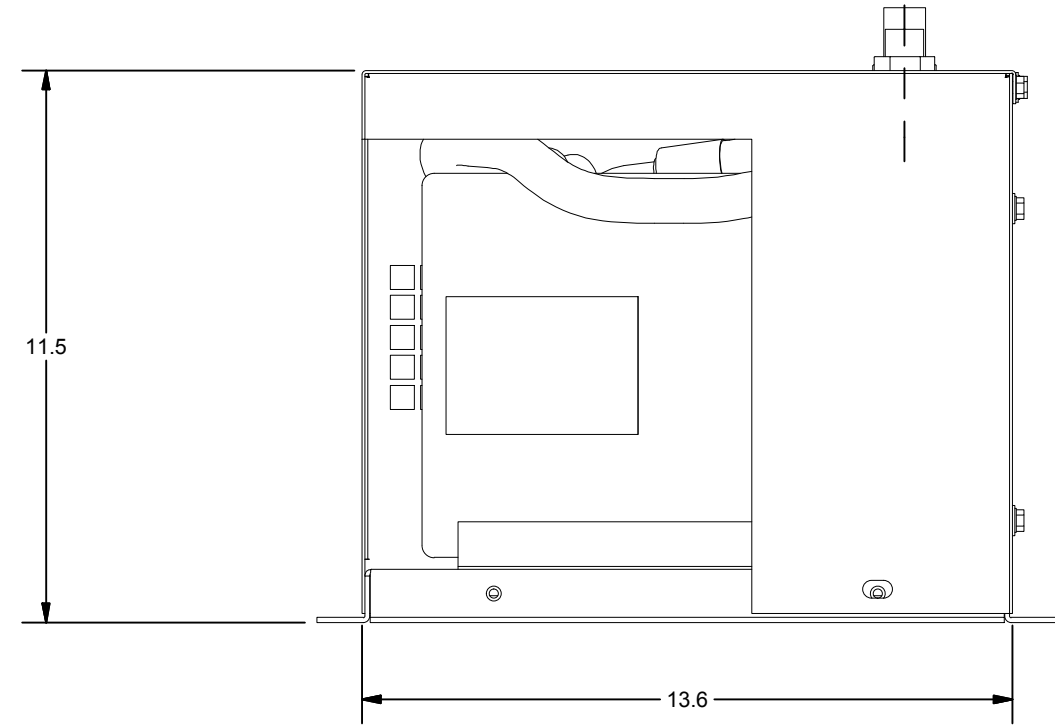
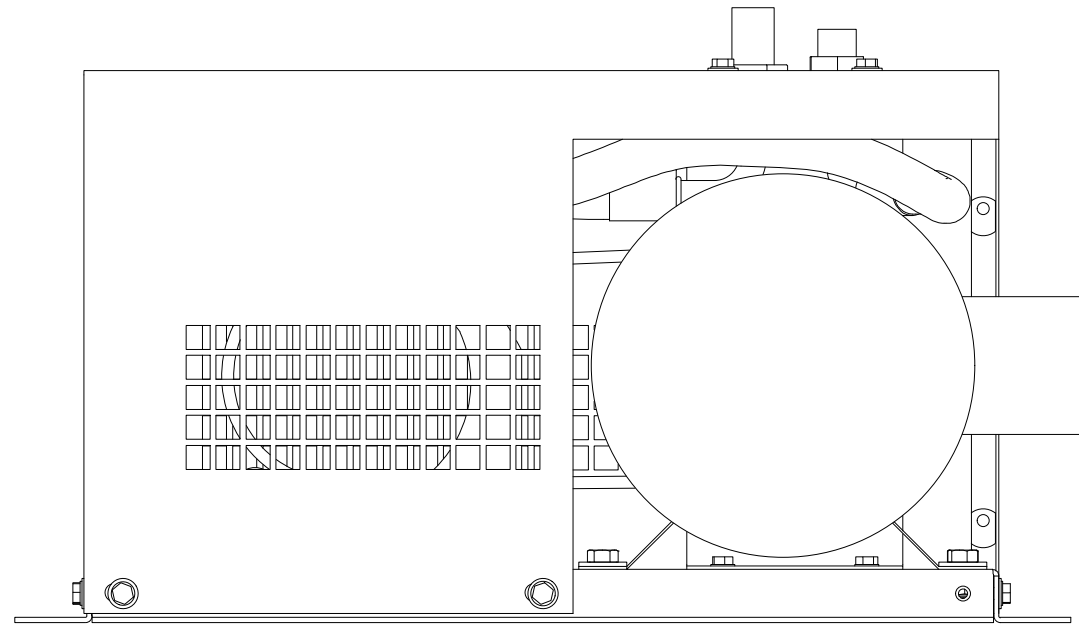



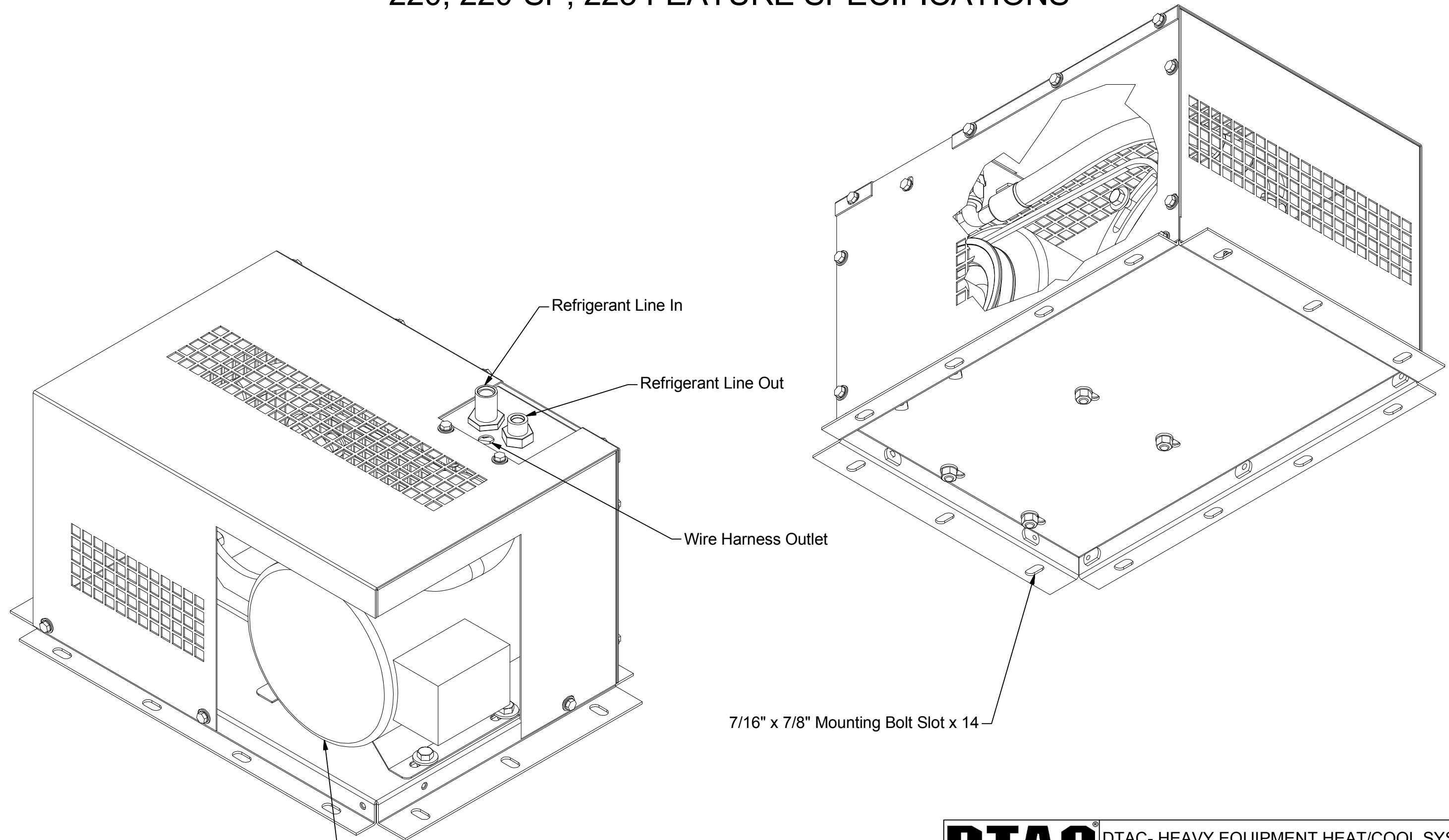
# 220, 220-SP, 223 FOOTPRINT AND MOUNTING INFORMATION



Mounting Specifications	
Quantity	Description
14	7/16" x 7/8" SLOT

		DTAC- HEAVY EQUIPMENT HEAT/COOL SYSTEMS	
		TITLE 220, 220-SP, 223 FOOTPRINT AND MOUNTING INFORMATION	
MODELED JSHAW		DWG NAME 220, 220-SP, 223 Drawings.idw	
DRAWN jhamaker	8/23/2011	SIZE B	NOTE: ALL UNITS IN INCHES

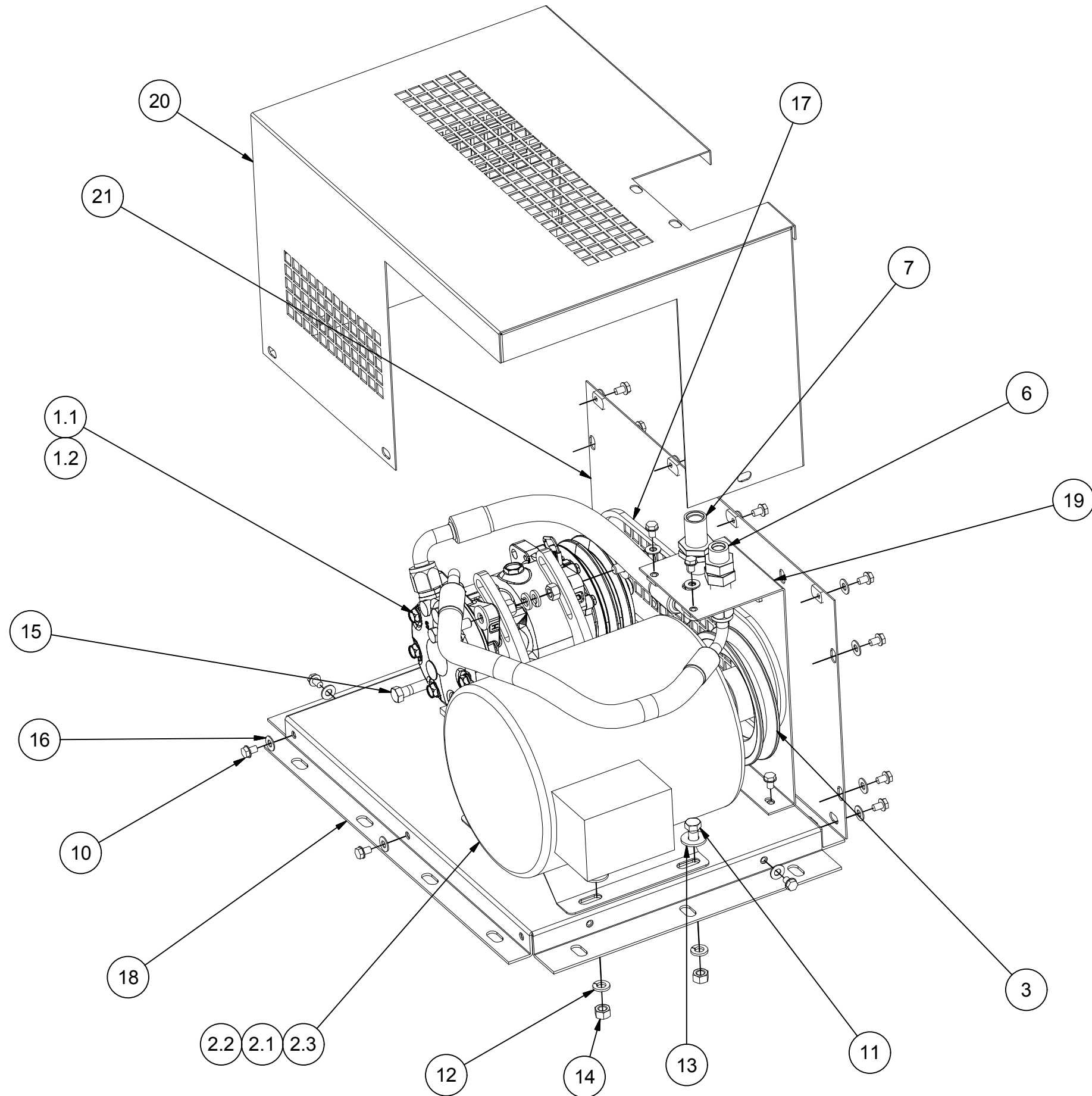
# 220, 220-SP, 223 FEATURE SPECIFICATIONS



Electric Motor- 3 Phase: 220-12 & 220-24: 208-230/460V, 60Hz  
 220-24SP: 220/380/440 V, 50Hz  
 Single Phase: 223-24: 575V, 60Hz


<b>DTAC</b> <sup>®</sup>		DTAC- HEAVY EQUIPMENT HEAT/COOL SYSTEMS	
		TITLE 220, 220-SP, 223 FEATURE SPECIFICATIONS	
MODELED		DWG NAME 220, 220-SP, 223 Drawings.idw	
JSHAW		SIZE B	NOTE: ALL UNITS IN INCHES
DRAWN	8/23/2011		
jhamaker			SHEET 2 OF 4

# 220, 220-SP, 223 PARTS BREAKDOWN AND UNIT SPECIFICATIONS

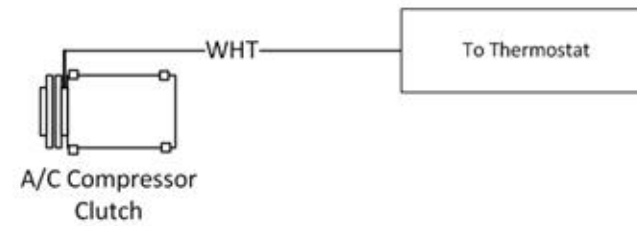


Parts Breakdown				
ITEM	QTY	DTAC NO.	DESCRIPTION	NOTE
1.1	1	01-01157	A/C Compressor for 12V applications	
1.2	1	01-05271	A/C Compressor for 24V applications	
2.1	1	02-04403	Electric Motor 3HP, 208-230/460V AC 60hz	1
2.2	1	02-04406	Electric Motor 3HP, 22/380/440V AC 50hz	2
2.3	1	02-04408	Electric Motor 3HP, 575V AC 60hz	3
3	1	02-04404	Pulley	
4	2	09-04012	#8 O-Ring	4
5	2	09-04013	#10 O-Ring	4
6	1	09-50004	#8 MIO Bulkhead w Jam Nut	
7	1	09-50005	#10 MIO Bulkhead w Jam Nut	
8	1	10-22008	#8 Hose Assembly	
9	1	10-22010	#10 Hose Assembly	
10	21	12-00003	1/4-20 X 3/8 Bolt	
11	4	12-00004	3/8-20 X .75 Bolt	
12	8	12-00006	Helical Spring Lock Washer	
13	6	12-00007	3/8 Flatwasher	
14	8	12-00009	3/8 Hex Nut	
15	4	12-00013	3/8-20 x 1.5 Bolt	
16	18	12-00109	1/4-20 Flatwasher	
17	1	12-22036	Belt, Electric Compressor	
18	1	22-00000	Base Assembly	
19	1	22-00002	Bulkhead Plate Assembly	
20	1	22-00003	Front Cover	
21	1	22-00004	Rear Cover	
-	-	Note 1	Motor on 220-12, 220-24	
-	-	Note 2	Motor on 220-24SP	
-	-	Note 3	Motor on 223-24	
-	-	Note 4	Part not shown	

ELECTRIC MOTOR AND COMPRESSOR SPECIFICATIONS					
HP	VOLTS	AMPS	HZ	COMP. CLUTCH VOLTS	DTAC NO.
3	208-230/460	8.3-8.2/4.1	60	12V	220-12
"	"	"	"	24V	220-24
"	220/380/440	7.8/4.4/3.9	50	"	220-24SP
"	575	3.1	60	"	223-24

		DTAC- HEAVY EQUIPMENT HEAT/COOL SYSTEMS	
		TITLE 220, 220-SP, 223 PARTS BREAKDOWN AND UNIT SPECIFICATIONS	
MODELED JSHAW		DWG NAME 220, 220-SP, 223 Drawings.idw	
DRAWN jhamaker	8/23/2011	SIZE B	NOTE: ALL UNITS IN INCHES

# Electric Compressor Wire Diagram



See Baldor Electric Motor Documentation for 3 Phase Electric Motor Wiring.

220 Series:	Baldor Motor 02-04403
220-SP Series:	Baldor Motor 02-04406
223 Series:	Baldor Motor 02-04408
224 Series:	Baldor Motor 02-04409



Manufacturer of Heavy Equipment Heat/Cool Systems  
5130 Edgefield Ln, TX 76065 USA  
Phone 1-800-527-9477 Fax 1-800-299-5972  
www.dtac.com

08.24.11

SIZE  
B

SHEET 4 OF 4