



ELECTRIC DRIVEN COMPRESSORS

220 Series

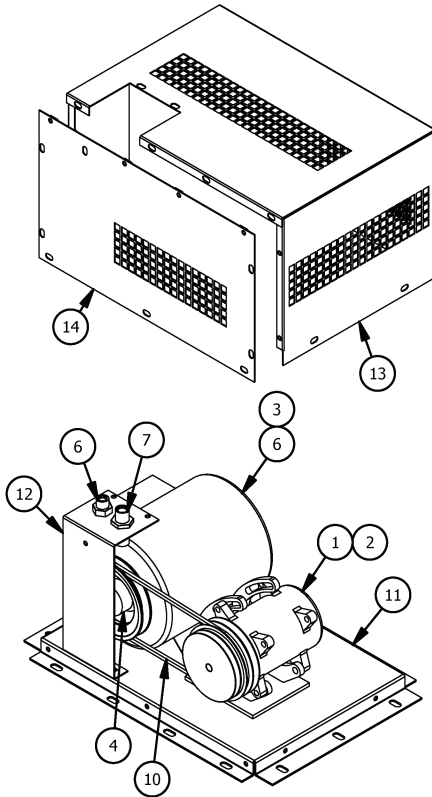
Electric Driven Compressor

ELECTRIC DRIVEN COMPRESSORS



FEATURES

- Industrial Strength 3 Phase A/C Electric Motor
- Available in 50 & 60 Hz
- Ideal When an Engine Driven Compressor is Not an Option



220 SERIES PARTS LIST

ITEM	220-12	220-24	220-24SP	DTAC NO.	DESCRIPTION	NOTE
1	0	1	1	01-05271	24V A/C Compressor	
2	1	0	0	01-05664	12V A/C Compressor	
3	1	1	0	02-04403	Electric Motor 3HP, 208-230/460V AC 60hz	
4	1	1	1	02-04404	Pulley	
5	0	0	1	02-04406	Electric Motor 3HP, 220/380/440V AC 50hz	
6	1	1	1	09-50004	#8 MIO Bulkhead w Jam Nut	
7	1	1	1	09-50005	#10 MIO Bulkhead w Jam Nut	
8	1	1	1	10-22008	#8 Hose Assembly	1
9	1	1	1	10-22010	#10 Hose Assembly	1
10	1	1	1	12-22036	Belt	
11	1	1	1	22-00000	Base	
12	1	1	1	22-00002	Bulkhead Plate	
13	1	1	1	22-00003	Front Cover	
14	1	1	1	22-00004	Rear Cover	
15				Note 1	Not Shown	

ELECTRIC MOTOR				COMPRESSOR	DTAC NO.
HP	VOLTS	AMPS	HZ	CLUTCH VOLTS	
3	208-230/460	8.3-8.2/4.1	60	12V	220-12
"	"	"	"	24V	220-24
"	220/380/440	7.8/4.4/3.9	50	"	220-24SP