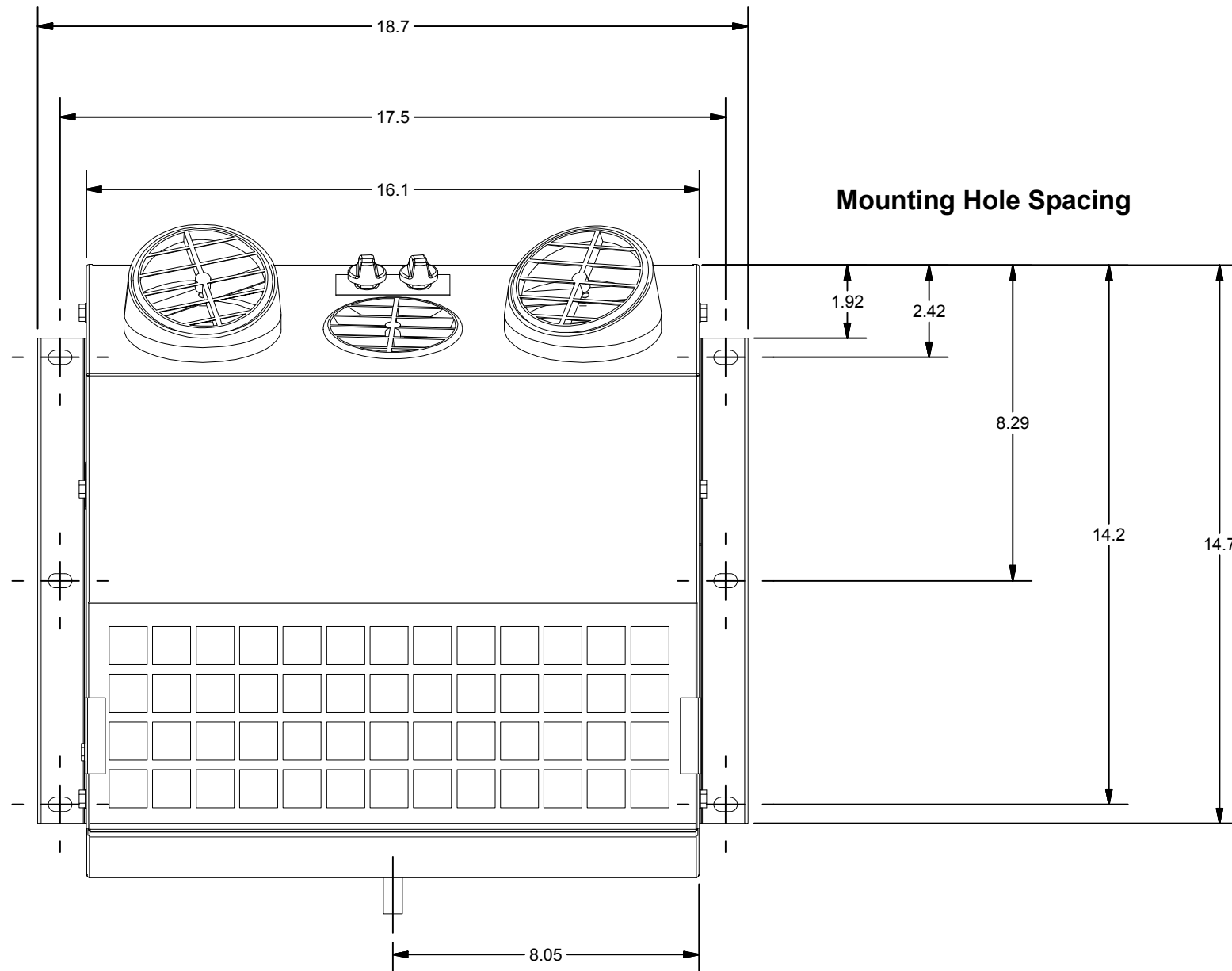
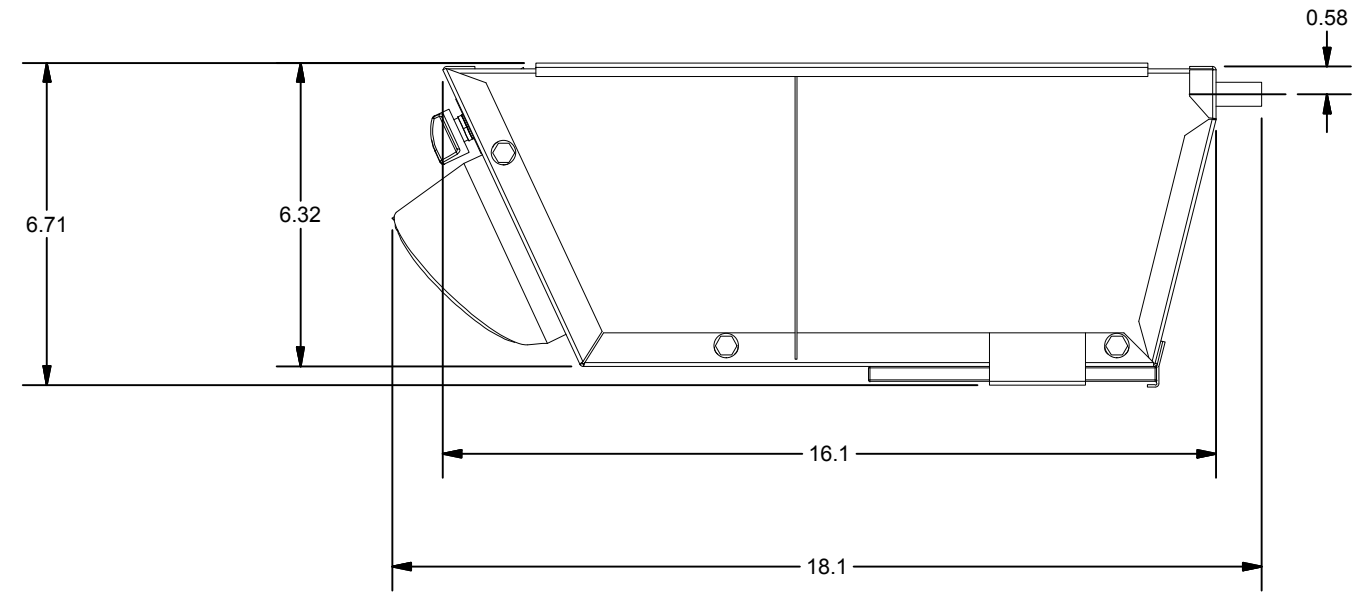
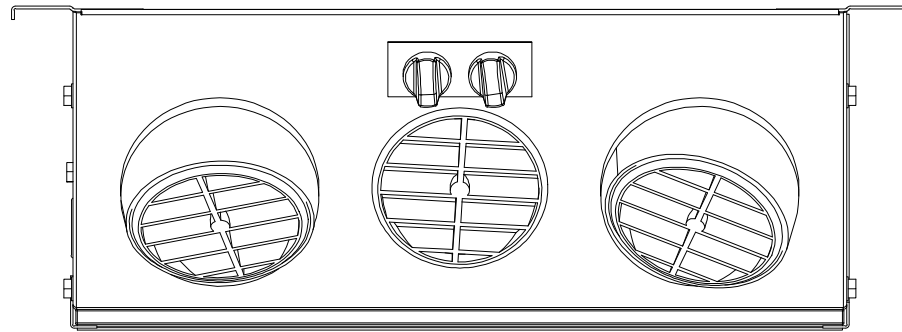


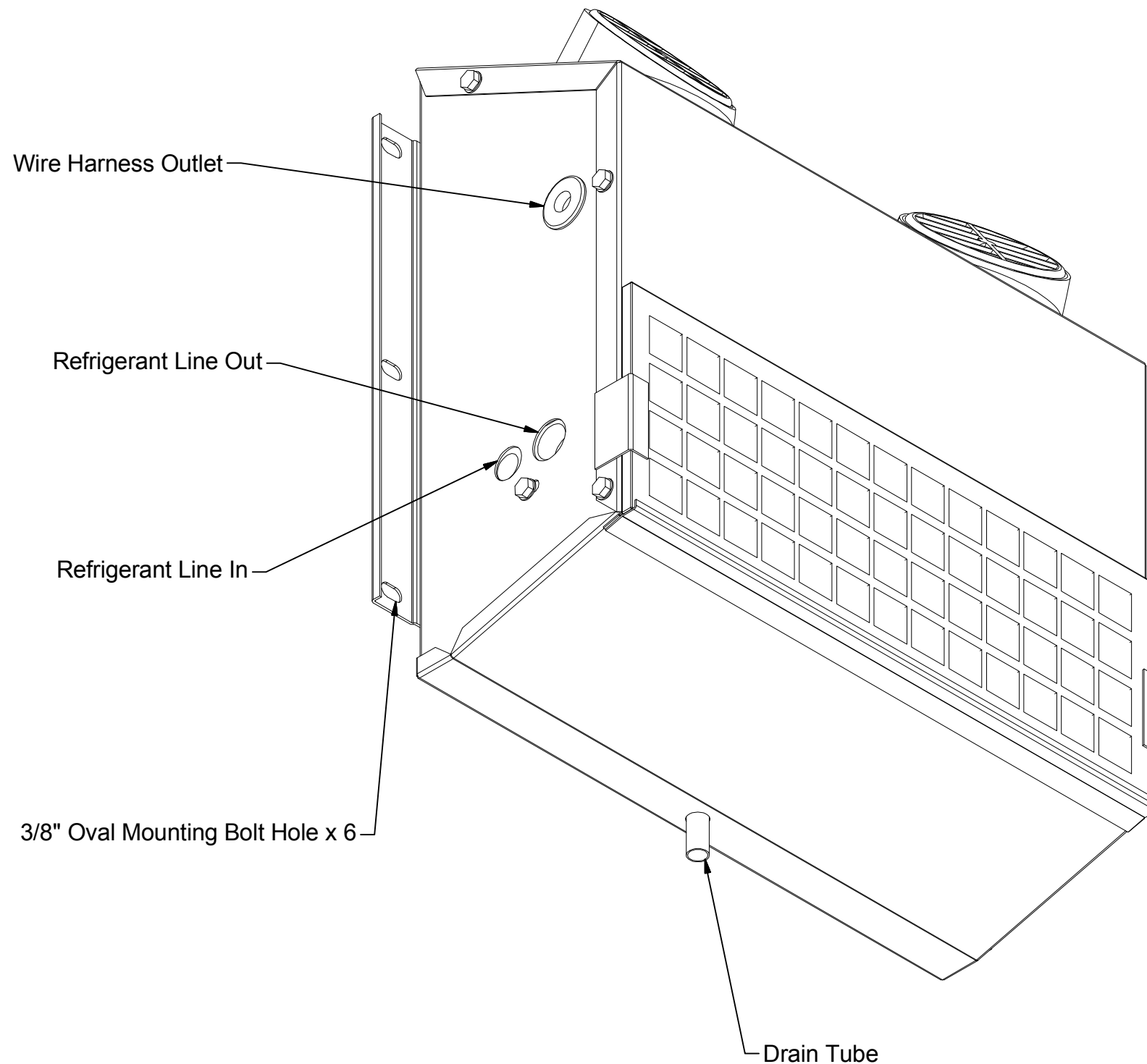
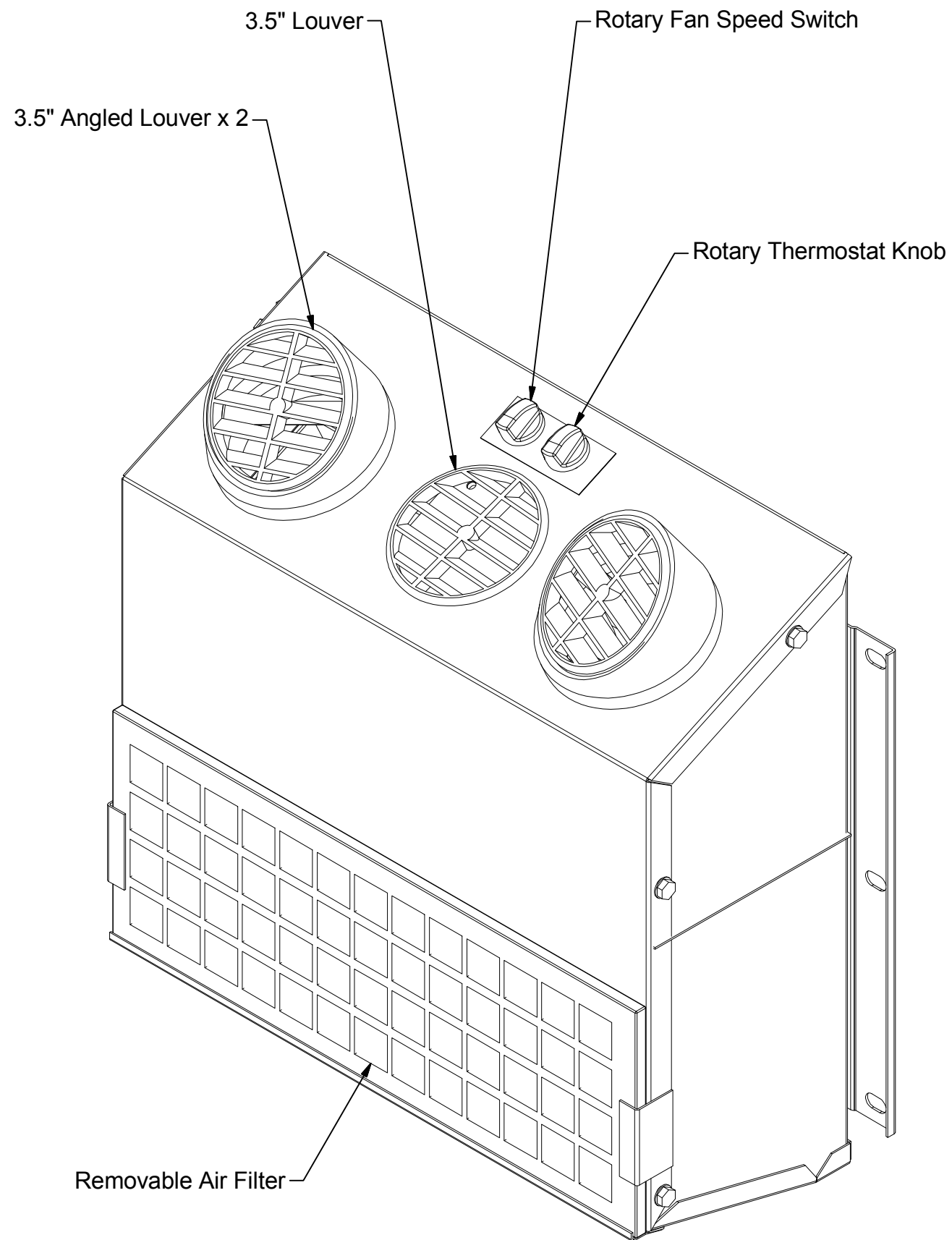
# 502 FOOTPRINT AND MOUNTING INFORMATION




| Mounting Specifications |                                |
|-------------------------|--------------------------------|
| Quantity                | Description                    |
| 6                       | 3/8" DIA OVAL HOLE- NO THREADS |

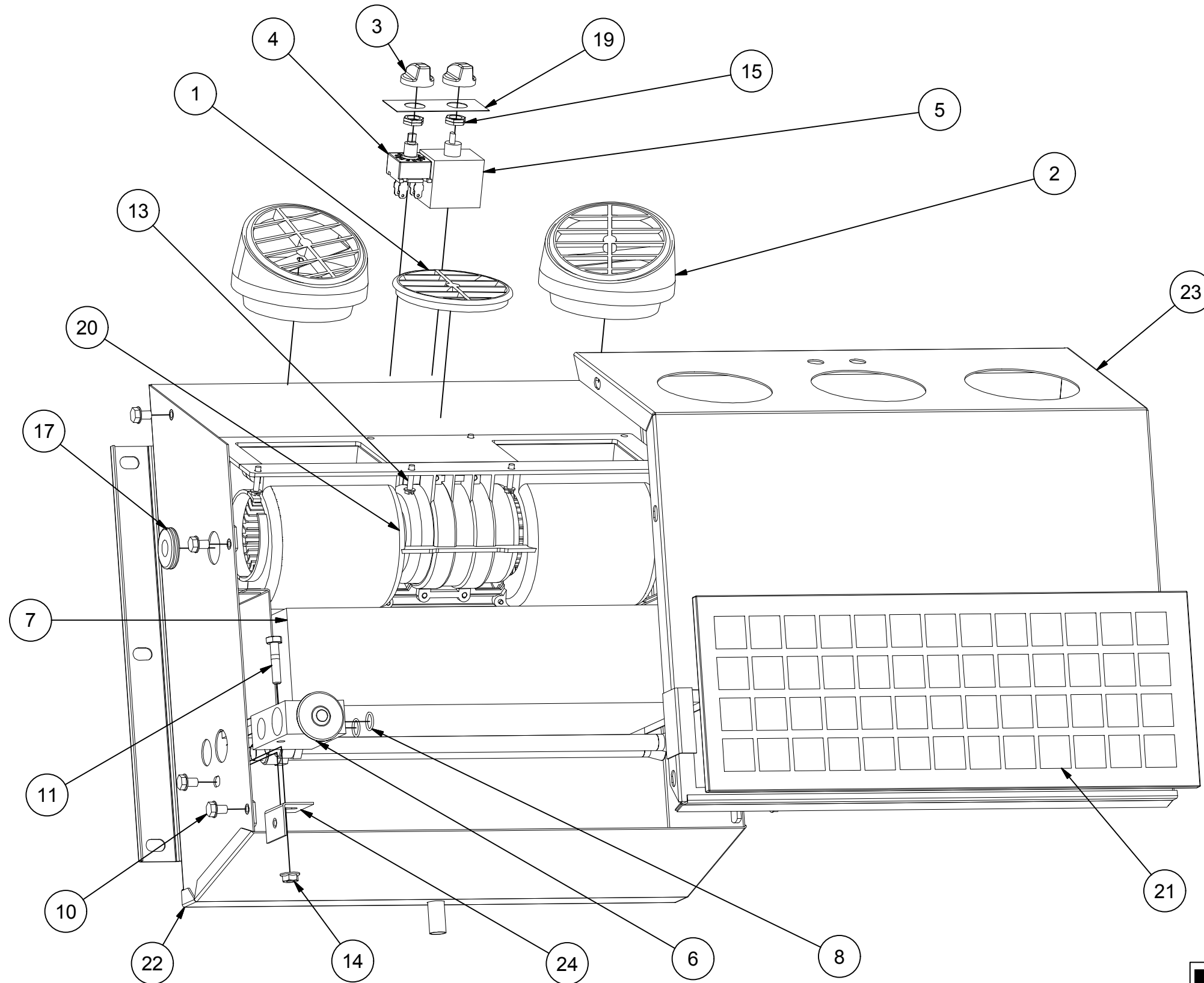
|                          |           |   |                           |
|--------------------------|-----------|---|---------------------------|
| <b>DTAC</b> <sup>®</sup> |           | DTAC- HEAVY EQUIPMENT HEAT/COOL SYSTEMS         |                           |
|                          |           | TITLE<br>502 FOOTPRINT AND MOUNTING INFORMATION |                           |
| MODELED<br>JSHAW         |           | DWG NAME<br>502 Drawings.idw                    |                           |
| DRAWN<br>jhamaker        | 8/11/2011 | SIZE<br>B                                       | NOTE: ALL UNITS IN INCHES |

# 502 FEATURE SPECIFICATIONS



|   |           |   |                           |
|---|-----------|---|---------------------------|
|  |           | DTAC- HEAVY EQUIPMENT HEAT/COOL SYSTEMS |                           |
|   |           | TITLE<br>502 FEATURE SPECIFICATIONS     |                           |
| MODELED<br>JSHAW  |           | DWG NAME<br>502 Drawings.idw            |                           |
| DRAWN<br>jhamaker   | 8/11/2011 | SIZE<br>B                               | NOTE: ALL UNITS IN INCHES |

# 502 PARTS BREAKDOWN AND UNIT SPECIFICATIONS

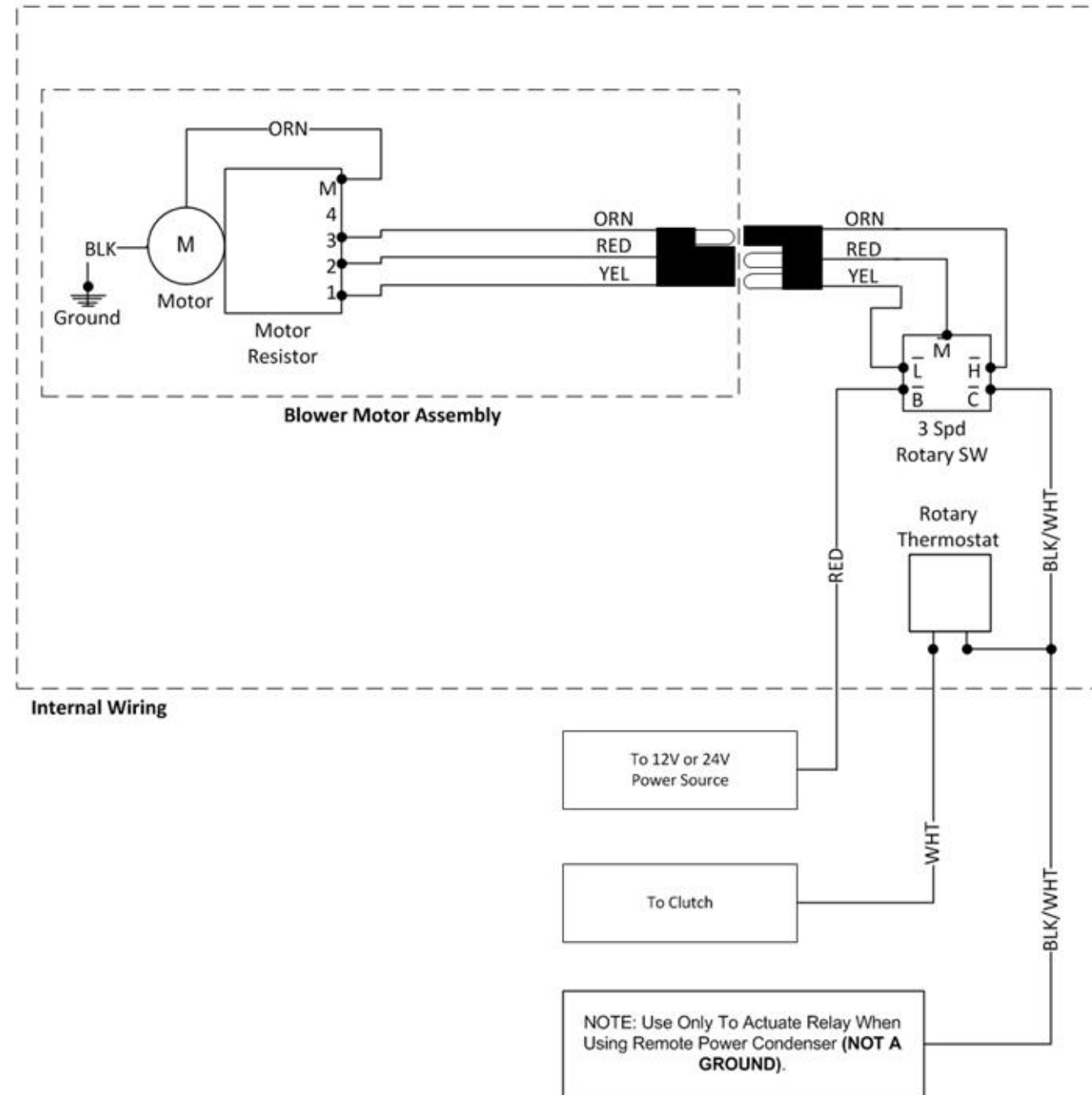


| Parts Breakdown |     |                         |   |      |
|-----------------|-----|-------------------------|---|------|
| ITEM            | QTY | DTAC NO.                | DESCRIPTION                                   | NOTE |
| 1               | 1   | 02-16061                | 3-1/2" Louver                                 |      |
| 2               | 2   | 02-16073                | 3.5" Angled Louver                            |      |
| 3               | 2   | 03-00165                | Knob  |      |
| 4               | 1   | 03-13006                | Rotary 3-Speed Switch                         |      |
| 5               | 1   | 03-14002                | Rotary Thermostat                             |      |
| 6               | 1   | 04-15004                | Block Expansion Valve                         |      |
| 7               | 1   | 07-00502                | Coil Assembly                                 |      |
| 8               | 2   | 09-04012                | #8 O-Ring                                     |      |
| 9               | 1   | 10-20012                | Drain Hose (4 ft)                             | 1    |
| 10              | 7   | 12-00003                | 1/4-20 X 3/8 Bolt                             |      |
| 11              | 1   | 12-00021                | 1/4-20 x 1.25 Hex Bolt                        |      |
| 12              | 1   | 12-00026                | Wire Harness                                  | 1    |
| 13              | 5   | 12-00056                | #8X3/4 Tap Screw                              |      |
| 14              | 1   | 12-00057                | 1/4-20 Whiz Nut                               |      |
| 15              | 4   | 12-00059                | Standard Switch Nut                           |      |
| 17              | 1   | 12-00116                | One Inch Grommet                              |      |
| 18              | 1   | 12-00123                | Kazoo Drain Restrictor                        | 1    |
| 19              | 1   | 12-50739                | Faceplate                                     |      |
| 20              | 1   | 30-51580 or<br>30-51581 | 12V Blower Assembly or<br>24V Blower Assembly |      |
| 21              | 1   | 40-00003                | Intake Filter                                 |      |
| 22              | 1   | 50-20000                | Housing 502                                   |      |
| 23              | 1   | 50-20001                | Lid 502                                       |      |
| 24              | 1   | 50-50500                | Expansion Valve Mnt Brkt                      |      |
| -               | -   | Note 1                  | Part not shown                                |      |

| UNIT SPECIFICATIONS |            |          |        |       |                    |          |
|---------------------|------------|----------|--------|-------|--------------------|----------|
| BTU'S COOL          | BTU'S HEAT | AIR FLOW | WEIGHT | MOTOR | CURRENT DRAW       | DTAC NO. |
| 18,000              | -          | 302 CFM  | 26 LBS | 1-12V | 13 AMPS @ 13.5 VDC | 502-12   |
| "                   | -          | "        | "      | 1-24V | 8 AMPS @ 26.8 VDC  | 502-24   |

|             |           |  |                           |
|-------------|-----------|--|---------------------------|
| <b>DTAC</b> |           | DTAC- HEAVY EQUIPMENT HEAT/COOL SYSTEMS              |                           |
| MODELED     |           | TITLE<br>502 PARTS BREAKDOWN AND UNIT SPECIFICATIONS |                           |
| JSHAW       |           | DWG NAME<br>502 Drawings.idw                         |                           |
| DRAWN       | 8/11/2011 | SIZE<br>B  | NOTE: ALL UNITS IN INCHES |
| jhamaker    |           |  | SHEET 3 OF 4              |

# 502 Series Wire Diagram



Manufacturer of Heavy Equipment Heat/Cool Systems  
5130 Edgefield Ln, TX 76065 USA  
Phone 1-800-527-9477 Fax 1-800-299-5972  
www.dtac.com

12-00026  
07.16.10

SIZE  
B

SHEET 4 OF 4