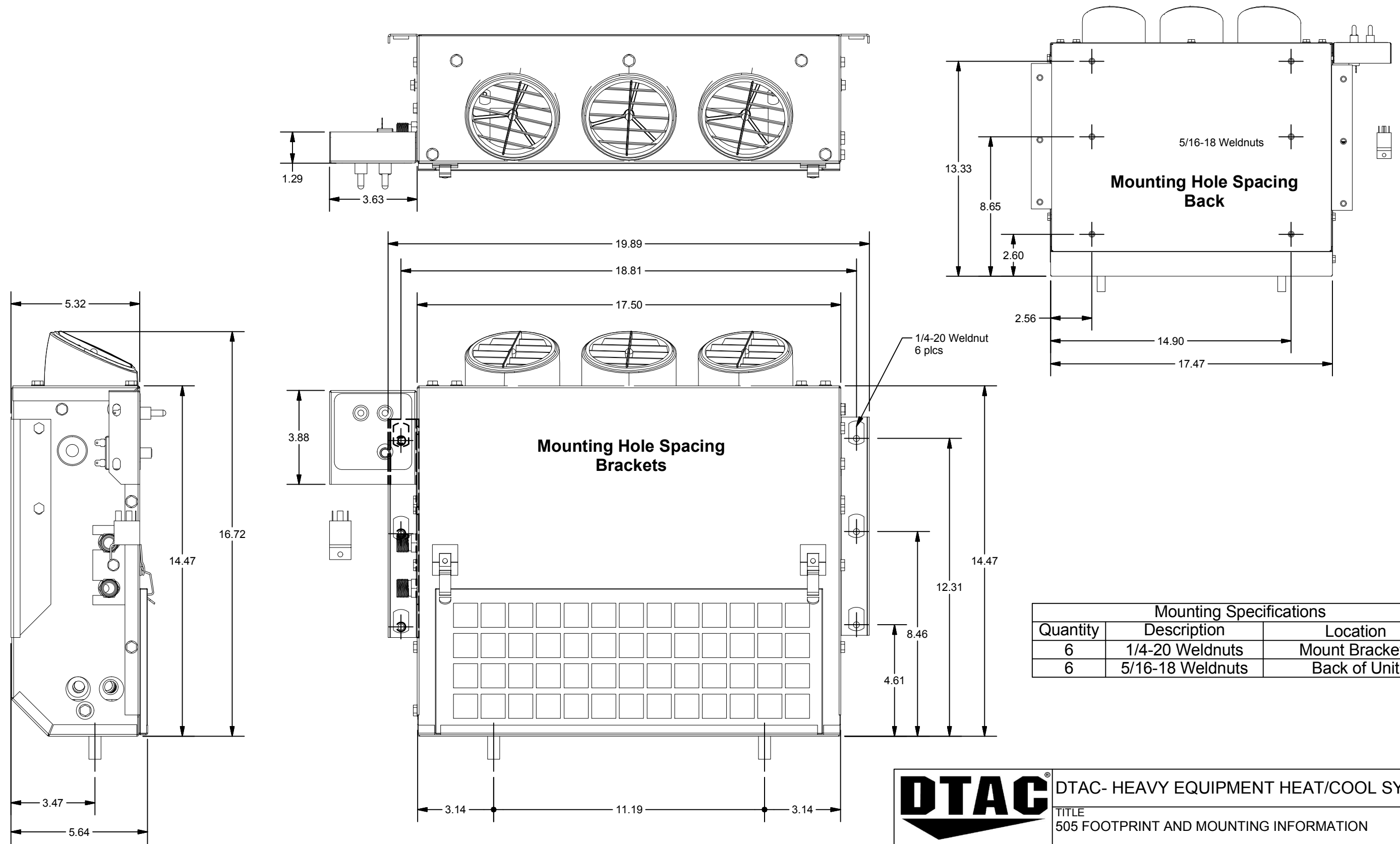


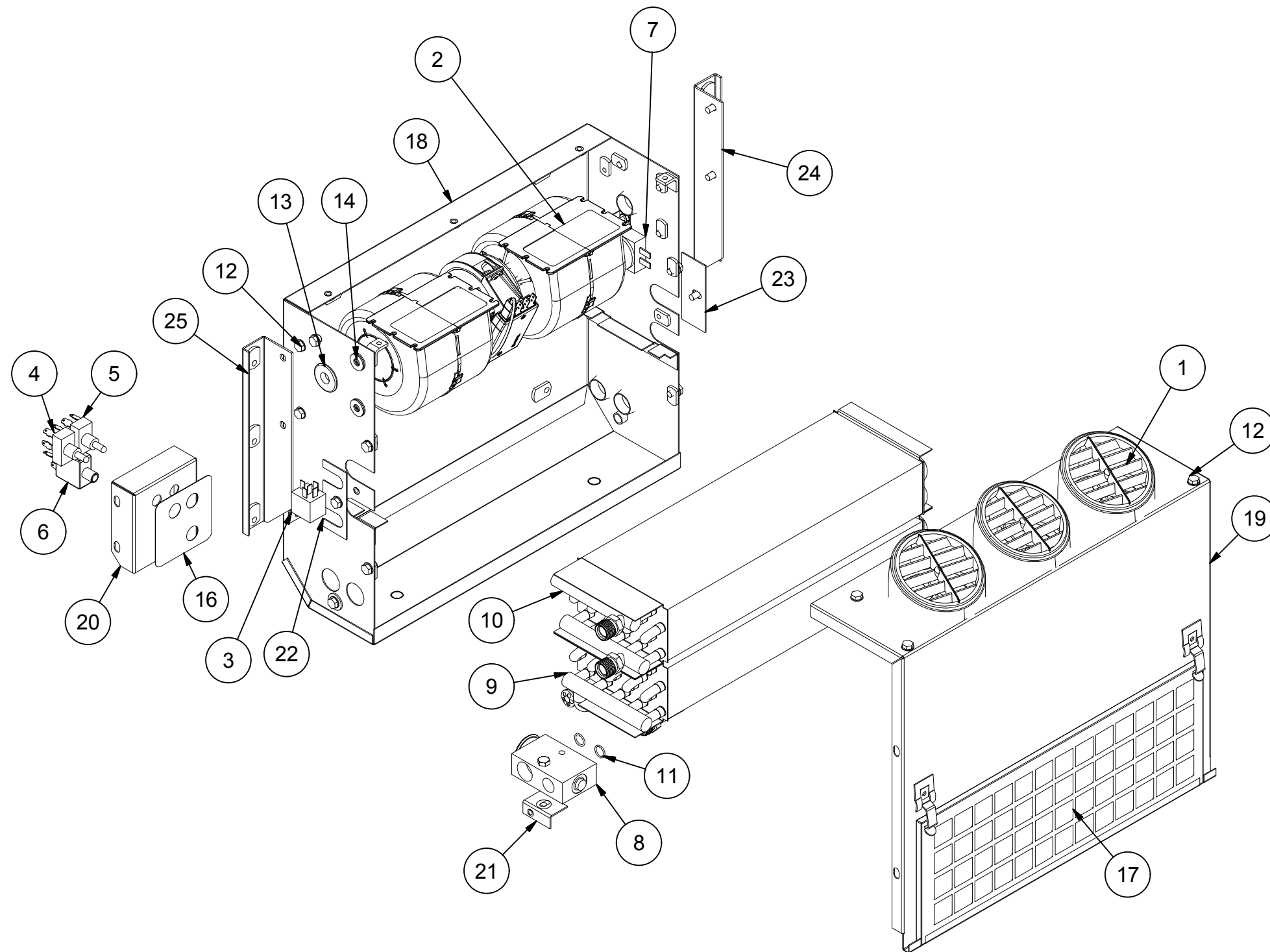
505 FOOTPRINT AND MOUNTING INFORMATION



Mounting Specifications		
Quantity	Description	Location
6	1/4-20 Weldnuts	Mount Brackets
6	5/16-18 Weldnuts	Back of Unit

DTAC		DTAC- HEAVY EQUIPMENT HEAT/COOL SYSTEMS	
		TITLE 505 FOOTPRINT AND MOUNTING INFORMATION	
MODELED JSHAW		DWG NAME 505, Drawings.idw	
DRAWN justin	8/25/2015	SIZE B	NOTE: ALL UNITS IN INCHES
			SHEET 1 OF 3

505 PARTS BREAKDOWN AND UNIT SPECIFICATIONS



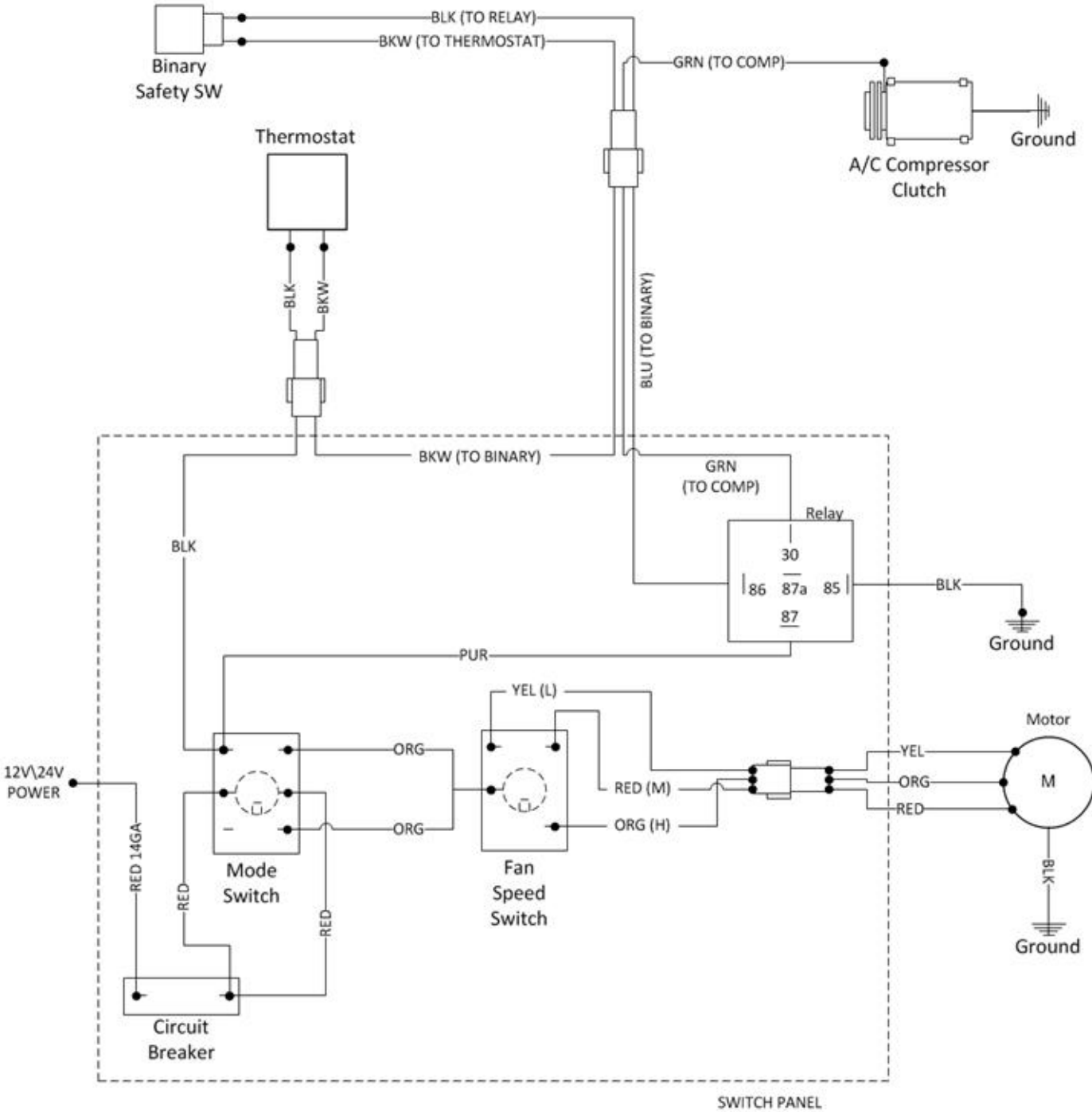
Parts List				
ITEM	QTY	PART NUMBER	DESCRIPTION	NOTE
1	3	02-16073	3.5 in Angled Louver	
2	1	02-17503	12V Blower Motor Assembly	
		02-17523	24V Blower Motor Assembly	
3	1	03-01702	12V Relay	
		03-01704	24V Relay	
4	1	03-13017	Toggle SW 6 -Term	
5	1	03-13018	Toggle SW 4 -Term	
6	1	03-13039	Circuit Breaker	
7	1	03-14013	Preset Thermostat	
8	1	04-15004	Block Expansion Valve	
9	1	07-00505EV	Evaporator Coil	
10	1	07-00505H	Heater Coil	
11	2	09-04012	#8 O-Ring	
12	22	12-00003	1/4-20 X 3/8 Bolt	
13	1	12-00116	One Inch Grommet	
14	4	12-00155	1/4-20 Black Washer	
15	1	12-00505	Wire Harness	1
16	1	12-50427	Faceplate	
17	1	40-00003	Intake Filter	
18	1	50-50000	Housing	
19	1	50-50001	Lid	
20	1	50-50003	Switch Panel	
21	1	50-50004	Block Valve Bracket	
22	1	50-50005	Coil End Plate	
23	1	50-50006	End Plate	
24	1	50-50007	Mount Brkt - Right	
25	1	50-50008	Mount Brkt - Left	
26	1	NOTE 1	Item not shown	

UNIT SPECIFICATIONS

BTU'S HEAT	BTU'S COOL	AIR FLOW	WEIGHT	MOTOR	CURRENT DRAW	DTAC NO.
22,000	15,200	300 CFM	30 LBS	1-12V	9 AMPS @ 13.5 VDC	505-12HC
"	"	"	"	1-24V	4.5 AMPS @ 26.8 VDC	505-24HC

DTAC [®]		DTAC- HEAVY EQUIPMENT HEAT/COOL SYSTEMS	
		TITLE 505 PARTS BREAKDOWN AND UNIT SPECIFICATIONS	
MODELED JSHAW		DWG NAME 505, Drawings.idw	
DRAWN justin	8/25/2015	SIZE B	NOTE: ALL UNITS IN INCHES
			SHEET 2 OF 3

505-HC Series Wiring Diagram



Manufacturer of Heavy Equipment Heat/Cool Systems
 5130 Edgefield Ln, TX 76065 USA
 Phone 1-800-527-9477 Fax 1-800-299-5972
 www.dtac.com

12-00505
 05.15.14

SIZE
 B